

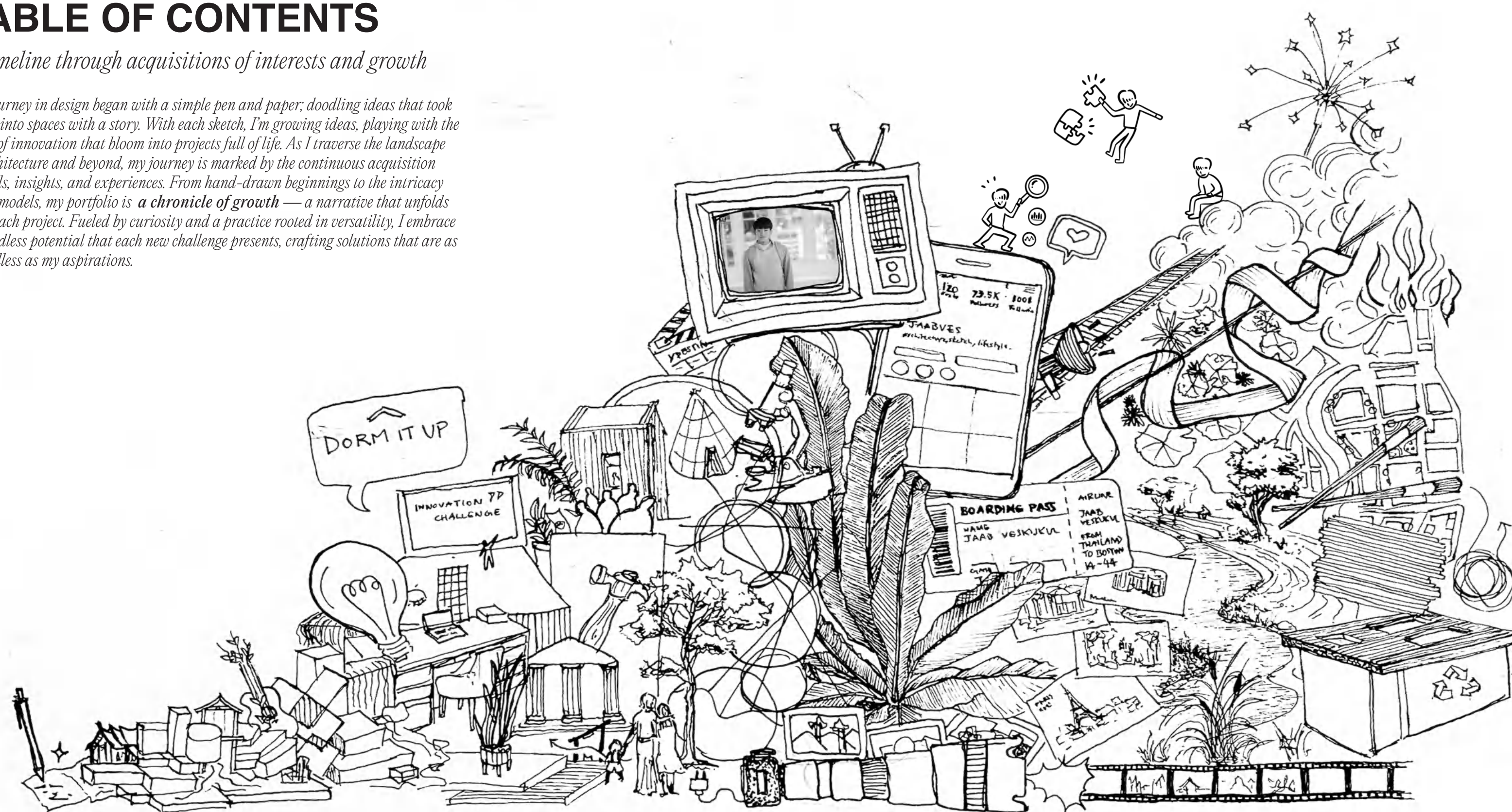


**PHUMISIT
JAAB
VESKIJKUL**
(selected works 2019-2023)

TABLE OF CONTENTS

A timeline through acquisitions of interests and growth

*My journey in design began with a simple pen and paper; doodling ideas that took shape into spaces with a story. With each sketch, I'm growing ideas, playing with the seeds of innovation that bloom into projects full of life. As I traverse the landscape of architecture and beyond, my journey is marked by the continuous acquisition of skills, insights, and experiences. From hand-drawn beginnings to the intricacy of 3D models, my portfolio is **a chronicle of growth** — a narrative that unfolds with each project. Fueled by curiosity and a practice rooted in versatility, I embrace the endless potential that each new challenge presents, crafting solutions that are as boundless as my aspirations.*



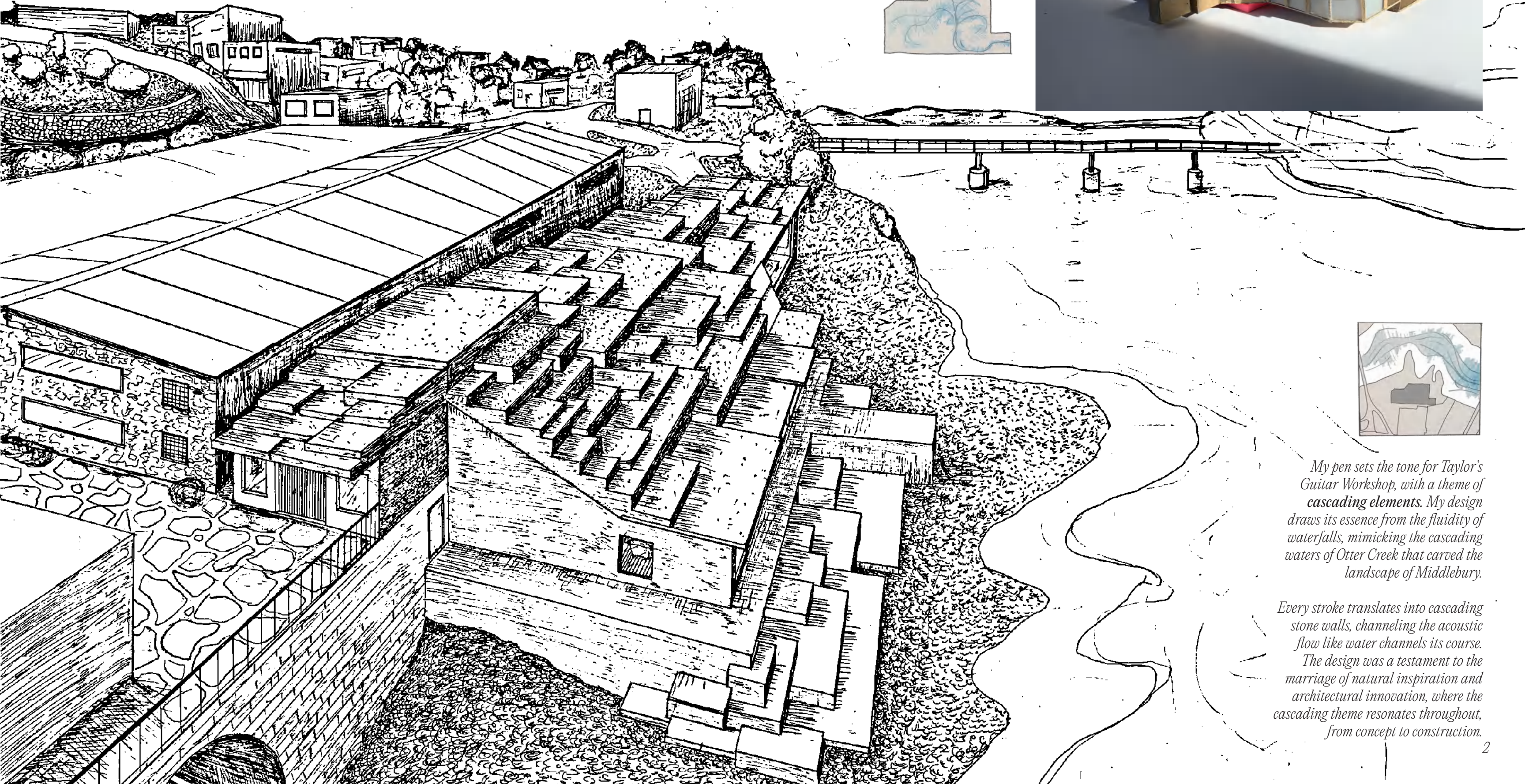
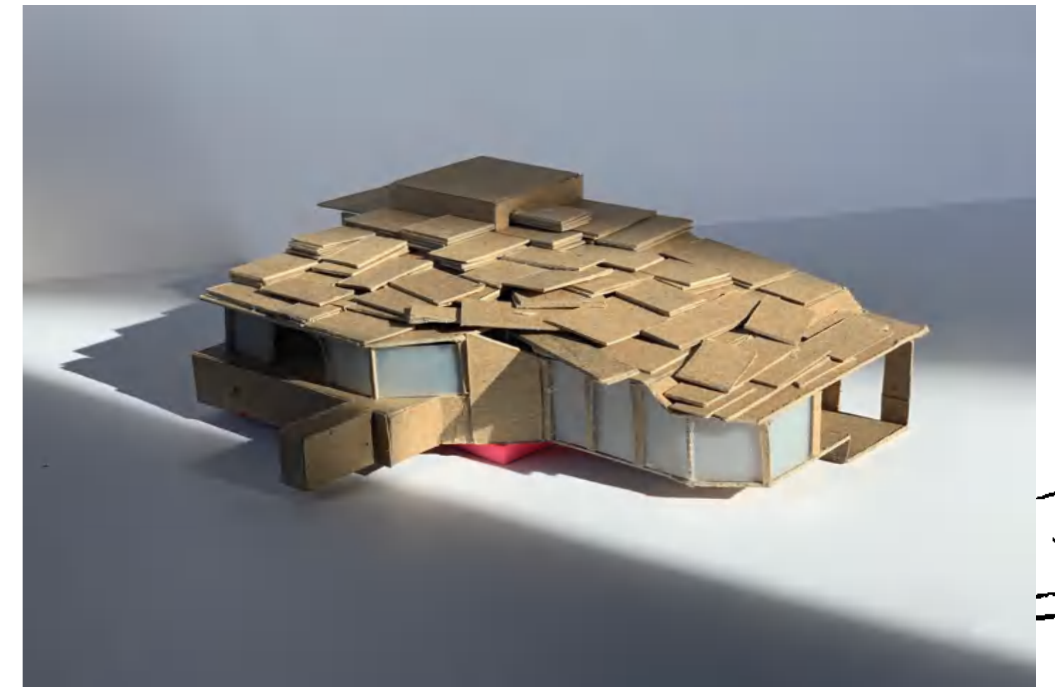
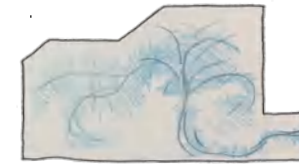
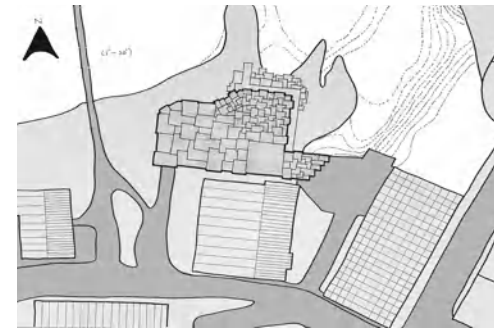
2019						2023	
TAYLOR'S WORKSHOP (2019)		BOOTHWOODS LOT 18 (2020)		YDESTINY TV SERIES (2021)		L'ART ENTREMÊLÉ (2022)	
DORMUP (2020)		OBJECT STUDY CENTER (2021)		CONTENT CREATION (2020-PRESENT)		ONE WELLNESS CENTER (2022)	
						CHOPSTICK REVIVAL (2023)	
						STORYTELLING (2018-PRESENT)	
						PHOTOGRAPHY (2016-PRESENT)	

TAYLOR'S GUITAR WORKSHOP

Intermediate Studio Design Project

*Instructor: Ashar Nelson
Autumn 2019
Middlebury, VT*

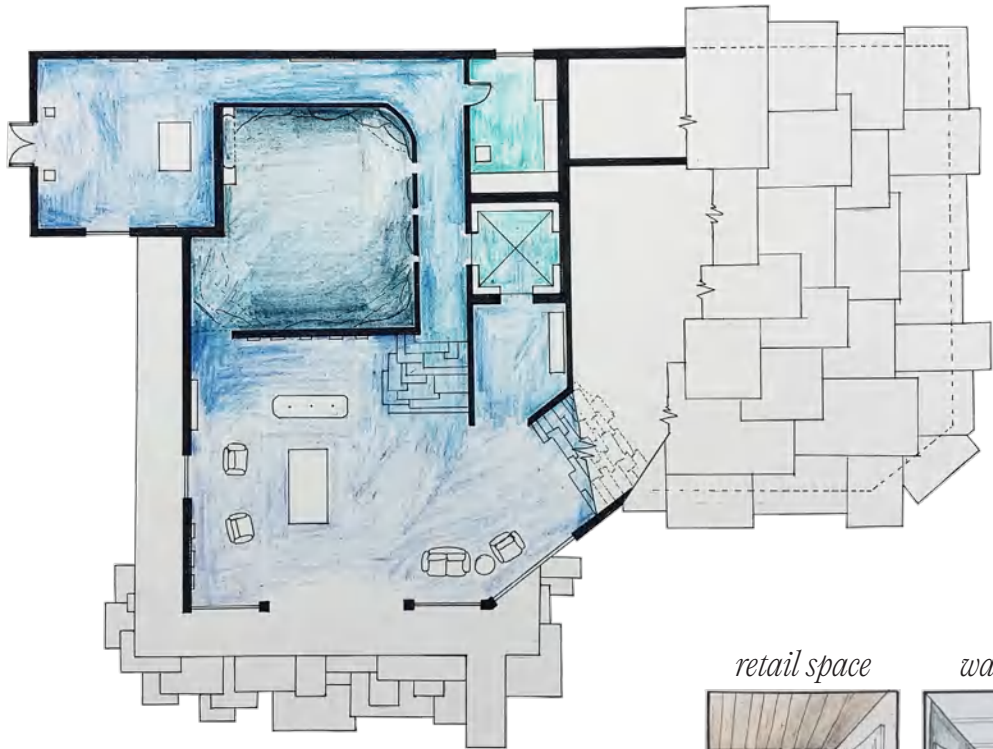
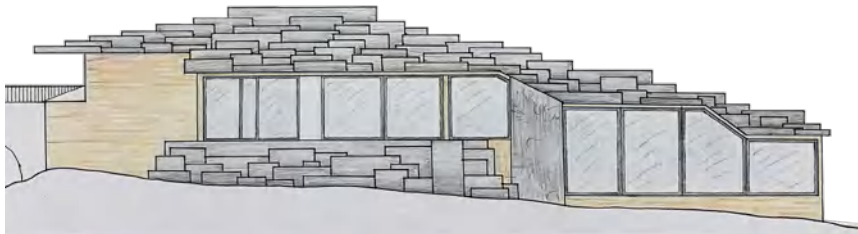
*Skills Developed:
Conceptual Design,
Materiality, Technical Skills*



*My pen sets the tone for Taylor's Guitar Workshop, with a theme of **cascading elements**. My design draws its essence from the fluidity of waterfalls, mimicking the cascading waters of Otter Creek that carved the landscape of Middlebury.*

Every stroke translates into cascading stone walls, channeling the acoustic flow like water channels its course. The design was a testament to the marriage of natural inspiration and architectural innovation, where the cascading theme resonates throughout, from concept to construction.

The design includes a cave-like performance space, a walkway showcasing Bob Taylor's guitar story, a workshop, and a retail area. Accessibility is prioritized with ADA compliance and a three-door elevator. The building incorporates an ancient circular water sluice gate into its acoustic design emphasizing the performance space. A hydroelectric generator is installed to utilize the Otter Creek's flow that generates electricity and controls the strong current.

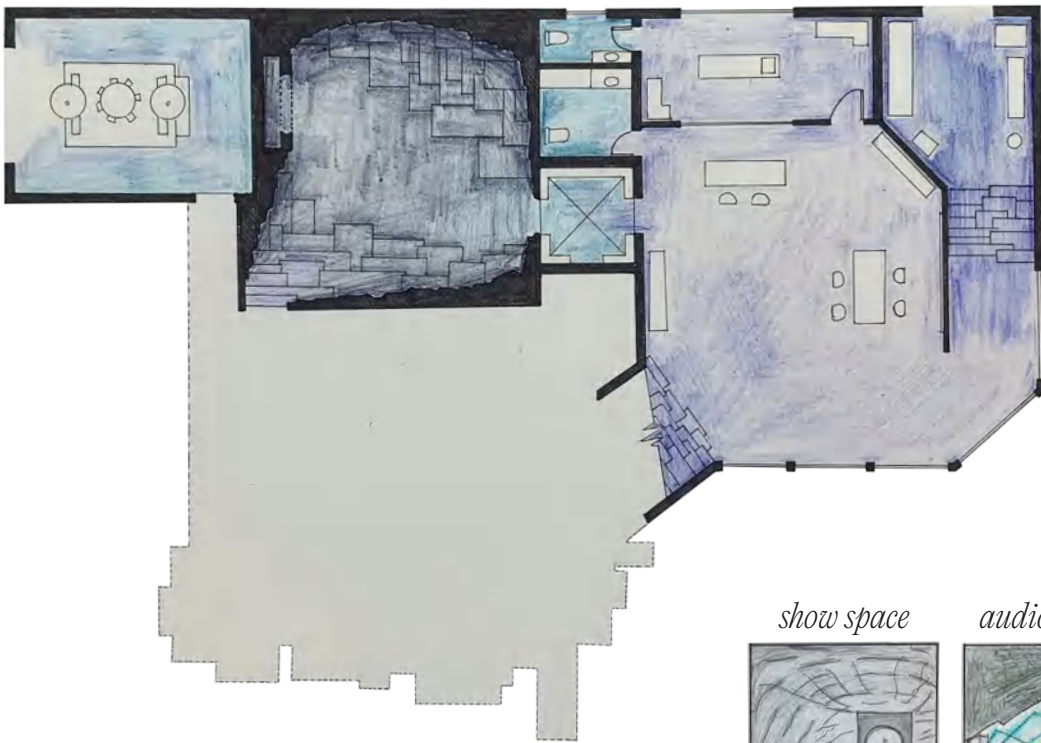
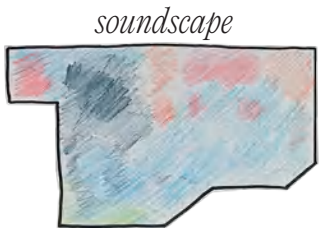


retail space

walk way

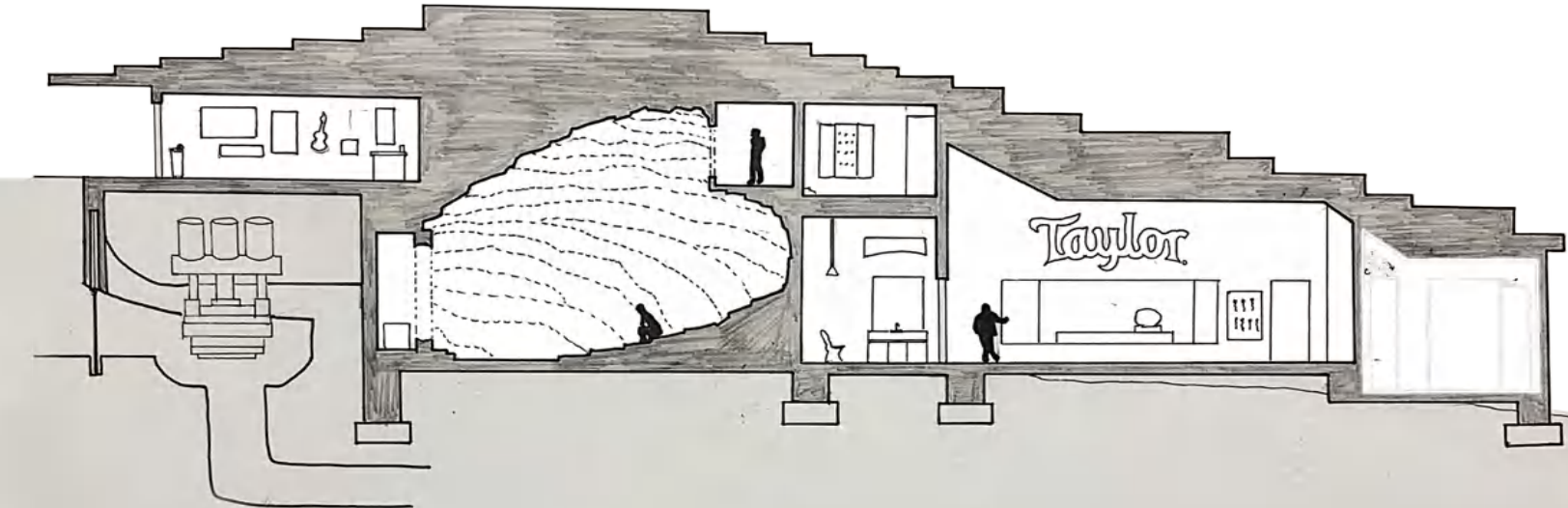
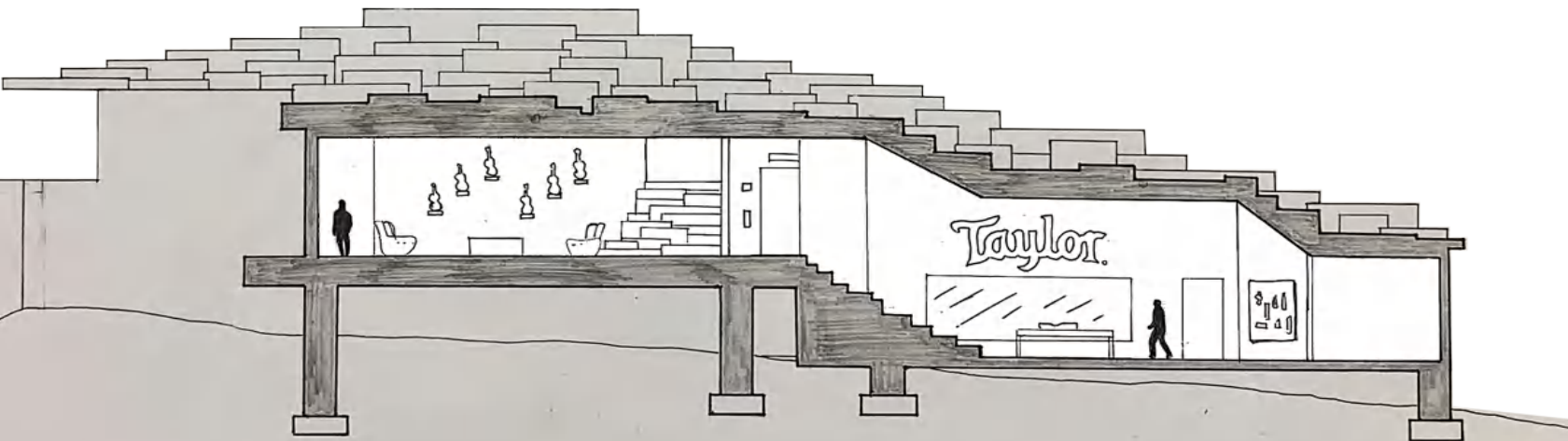
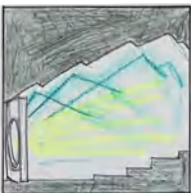


The marble and stone, sourced from the local Middlebury MarbleWorks, were not just building materials but also instruments to modulate sound. The architectural narrative unfolds through a series of spaces that flow into one another. Drawing inspiration from the Sydney Opera House, the central performance area forms a basin where all the musical and spatial elements pool together, creating an ambiance where every note resonates with the purity of nature's acoustics.



show space

audio system





Self-led Innovation Startup

Advisors:
Chrystal Brown, Greg Conrad
January 2020

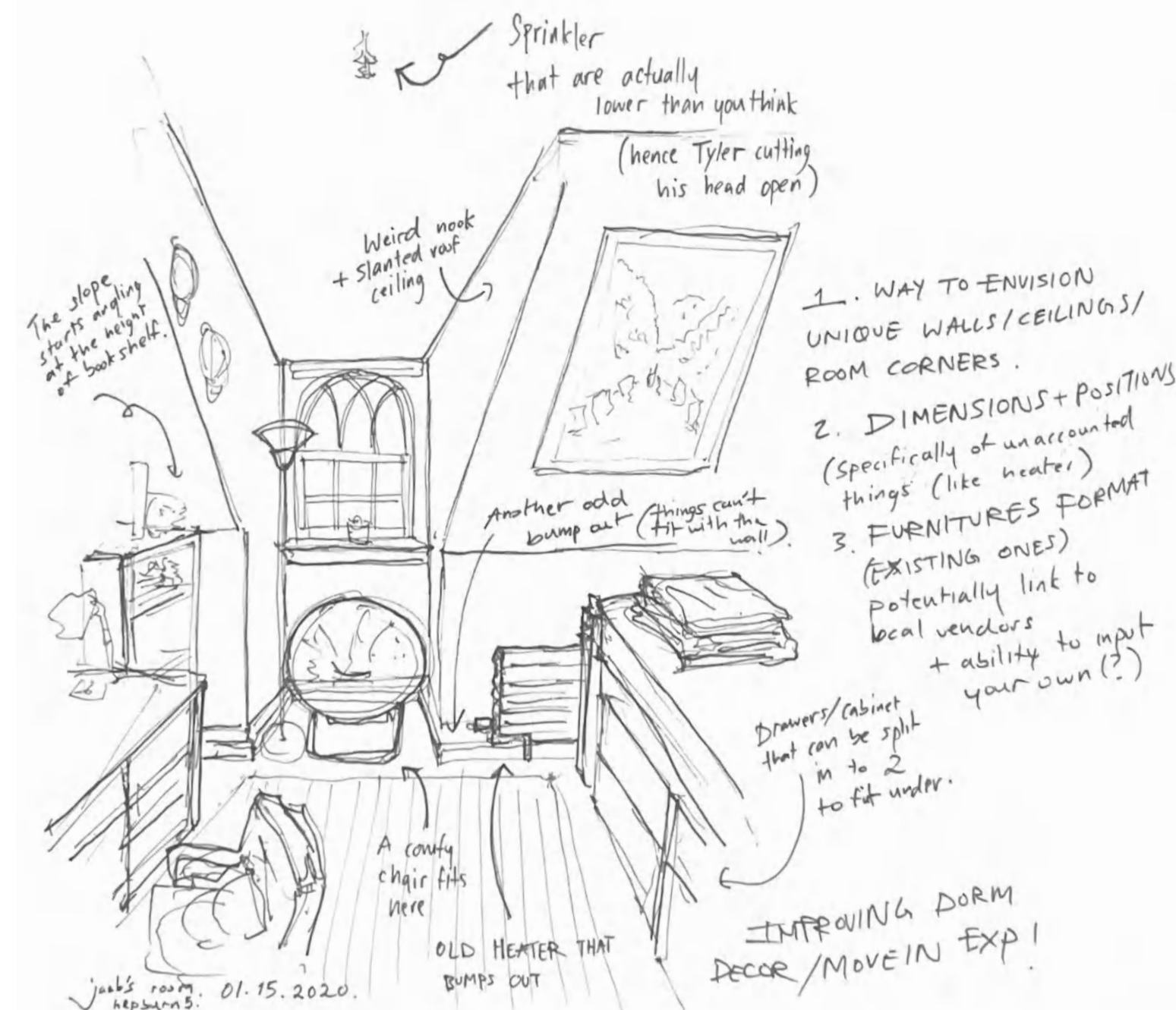
Skills Developed:
Startup Pitching and Presentation,
UX/UI Design, and Innovation

Winner of Innovation Challenge, Awarded \$3000 by MiddChallenge, Recipient of LaunchVT program

As my interest in architecture solidified, I ventured into **innovating under constraints**. Through an online platform called DormUP, I demonstrated my commitment to design-thinking and turning everyday problems into opportunities to innovate.

While serving as a Residential Advisor I witnessed my hallmate cut his head open on a sprinkler when moving in. As a result, DormUP emerged from the confines of a typical dorm room addressing ergonomic challenges in confined living spaces.

This project was a fusion of architectural innovation and user-centric design, focusing on optimizing space utilization through 3D modeling. The platform allowed users to experiment with furniture arrangements adhering to efficient spatial planning principles.



dormUPHow It WorksExploreLog InSign Up

How It Works

1. Select your living space
Shop your look directly from your designs in one easy checkout with exclusive discounts.

2. Rearrange Freely
Shop your look directly from your designs in one easy checkout with exclusive discounts.

3. Shop with Confidence
Shop your look directly from your designs in one easy checkout with exclusive discounts.

Real Design Stories

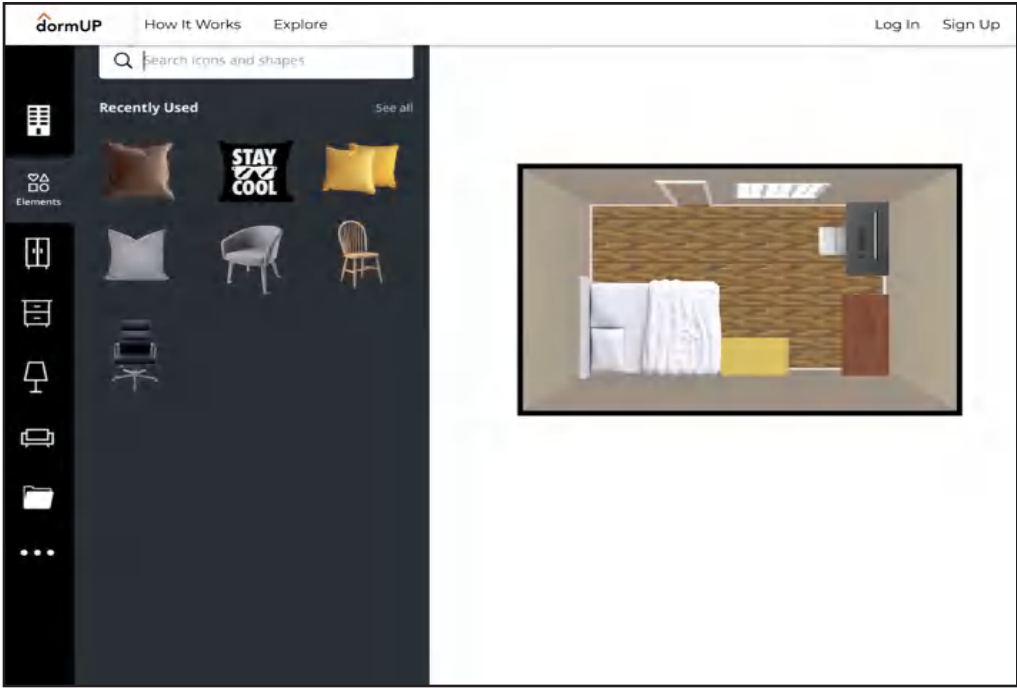
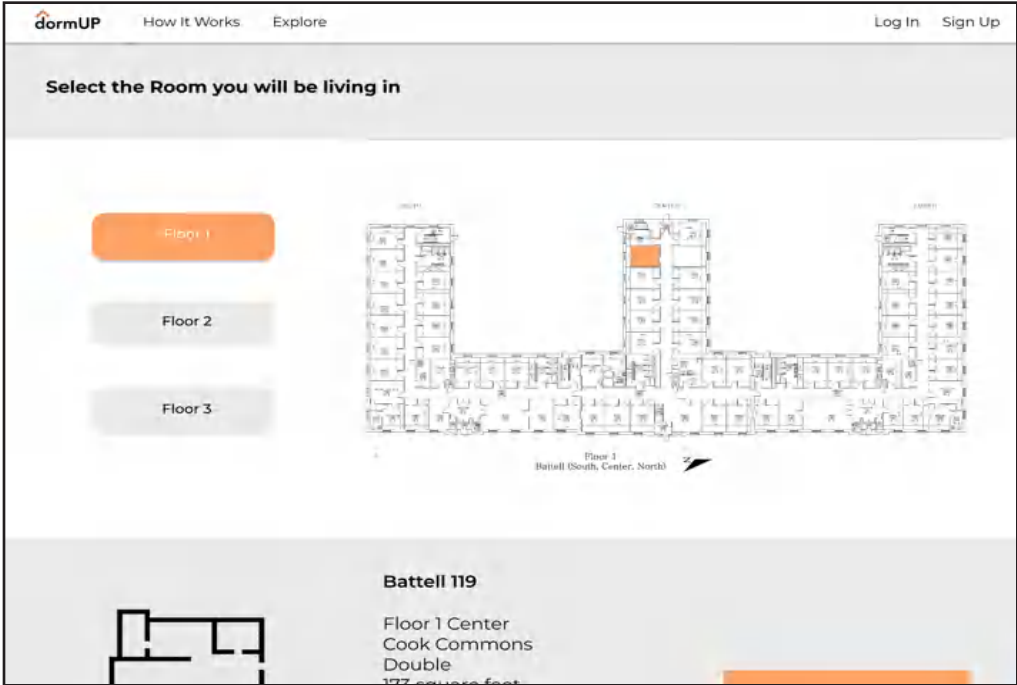
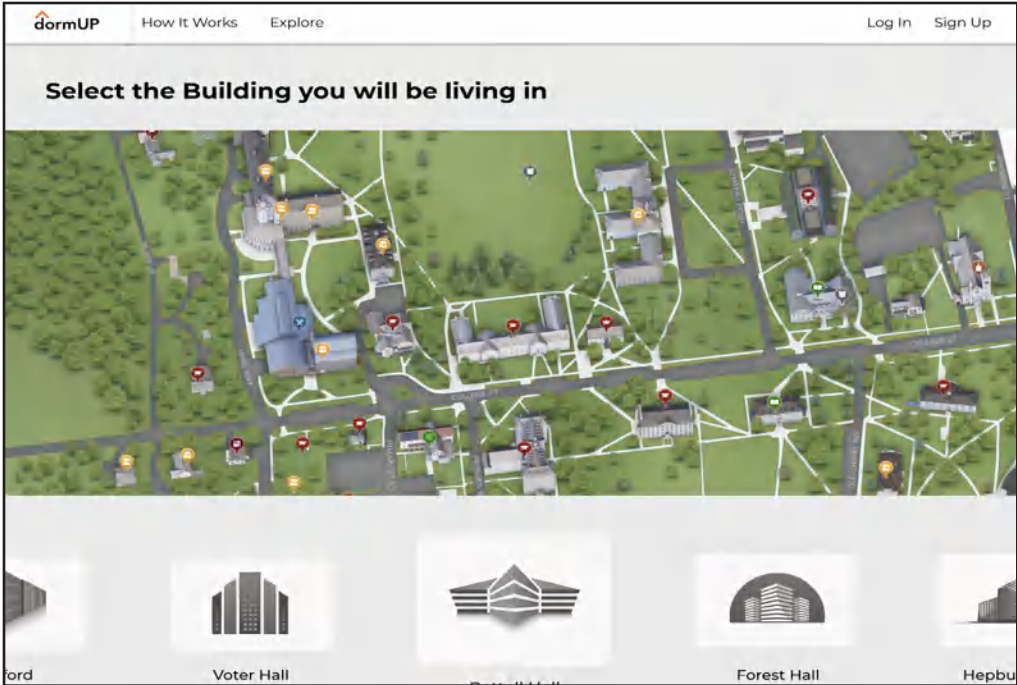
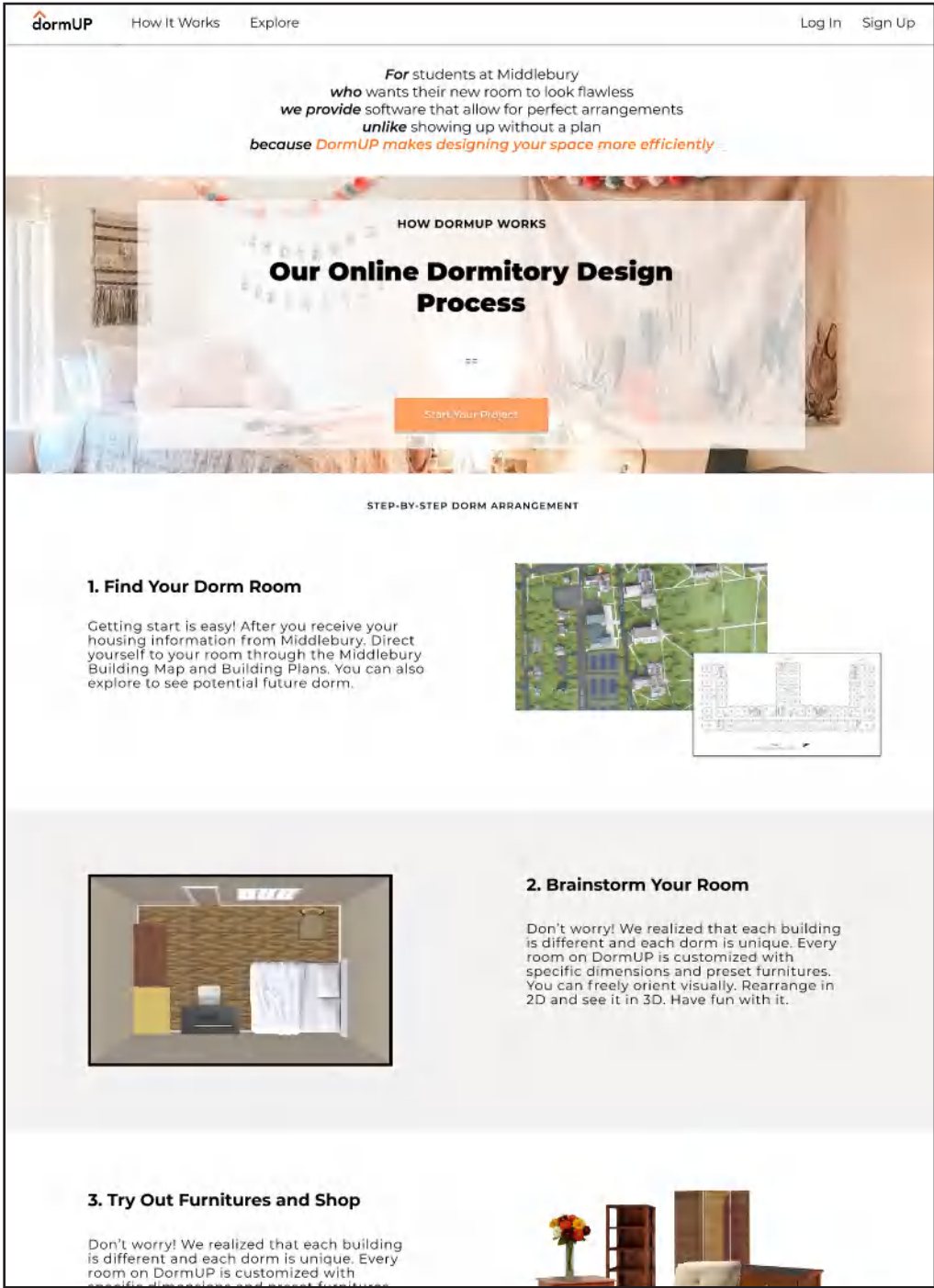
Will Hoppin and Jaab Vesikjikul
As roommates, moving in as first years was a mess. Our room was small, Our furnitures didn't fit. However, with **dormUP** our sophomore year room is kind of the trailblazer of the dorm right now.

[Read Full Story](#)

DormUP was created in the MiddCORE program, a rigorous educational journey of over 160 hours in mentor-led workshops. These workshops covered a spectrum of critical skills including leadership acumen, design thinking methodologies, and public speaking prowess. The knowledge and skills honed during this time were instrumental in the conception and development of this project.

When pitched to a panel of judges at the Innovation Challenge, DormUP garnered acclaim securing victory among its competitors. This experience became a reflection of my commitment to transformative ideas and entrepreneurship.

After DormUP won the Innovation Challenge, it was selected for the prestigious LaunchVT Accelerator Program. My compelling startup pitch was cemented with an award of \$3,000 from MiddChallenge.



Understanding How DormUP Enhances Your College Experience:

Blueprint Utilization: DormUP transforms the blueprints provided by educational institutions into detailed features and dimensions of campus rooms. As a student, your journey begins by selecting the living space assigned to you.

Visualization and 3D Modeling: Imagine stepping into your dorm room before arriving on campus. DormUP allows you to visualize your space through a 3D model, showcasing every nook and the provided furnishings.

Custom Arrangement Exploration: Discover the most efficient layout for your dorm room. With DormUP, you can either import the dimensions of your personal furniture or experiment with our curated furniture samples to ensure a perfect fit before moving them across the country.

Local Shopping Partnerships: Furnish and decorate your dorm room by shopping with our local partner companies. Like playing a real-life version of The Sims, you're the architect of your own living space. Design a room you love, minus the moving day mishaps and spatial misjudgments.

BOOTHWOODS LOT 18

Designed & Built Affordable Housing, Completed in 2022

A collaboration with the Addison County Habitat for Humanity

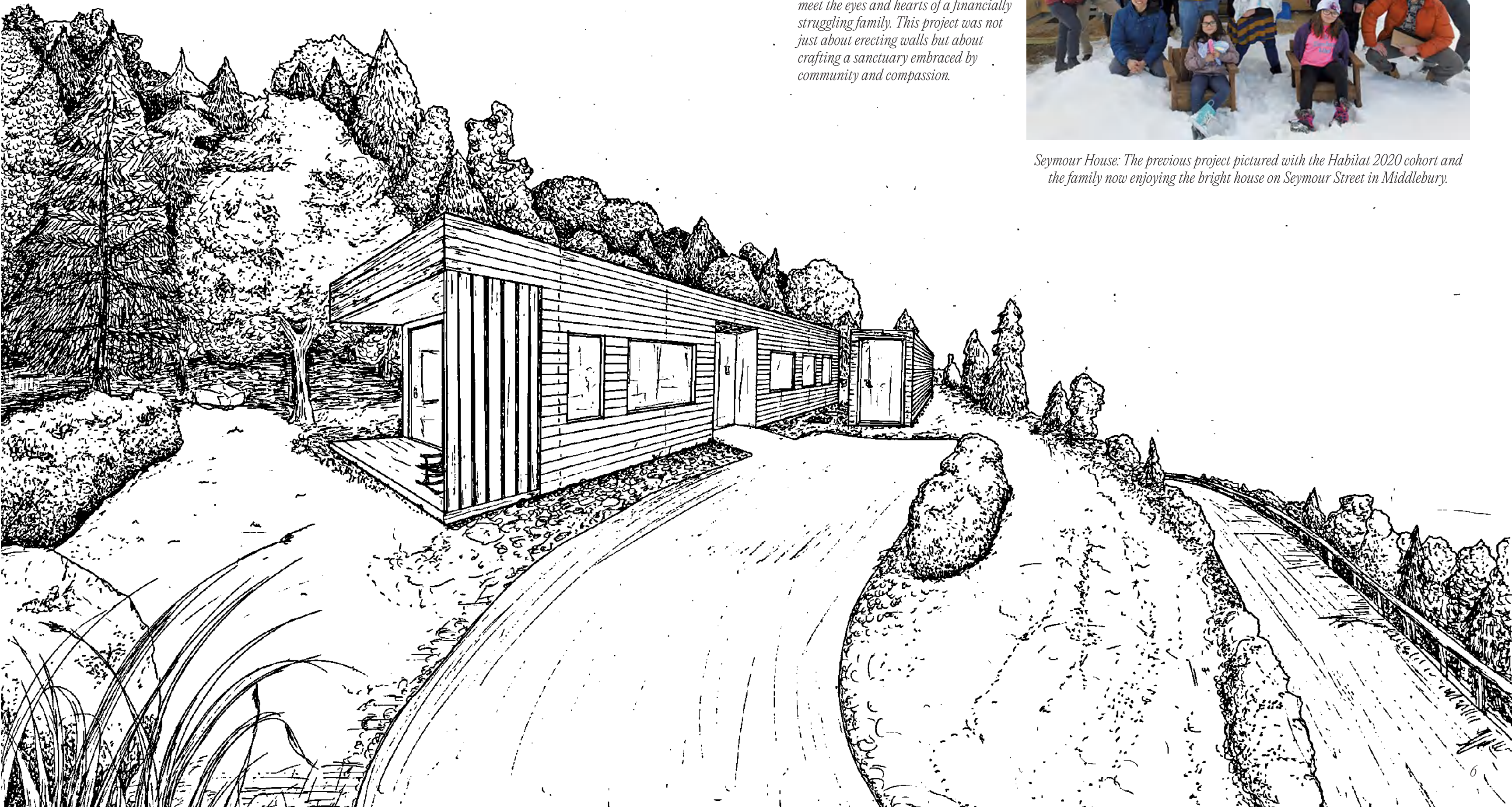
*Instructor: John McLeod
Autumn 2021
Vergennes, VT*

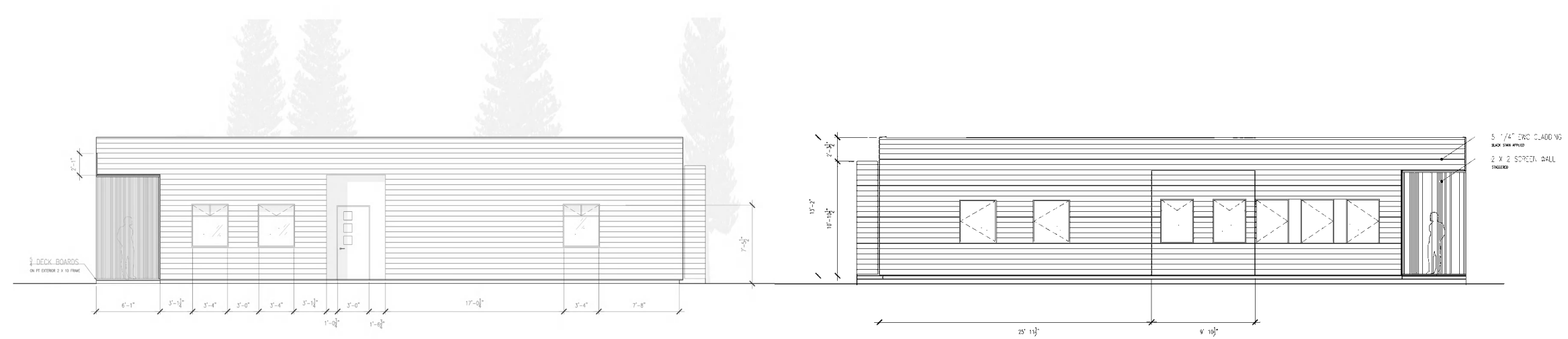
*Skills Developed:
Collaborative Design, Financial &
Sustainability Standards
Construction Development*

*On the sloped terrains of Vergennes,
I learned to design with **empathy**
and **precision**. Partnering with
Habitat for Humanity, I helped forge
the Boothwoods lot 18 house from the
conceptual to construction design
until approved by VT administration.
A harmonious blend of affordability
and performance, our creation rose to
meet the eyes and hearts of a financially
struggling family. This project was not
just about erecting walls but about
crafting a sanctuary embraced by
community and compassion.*

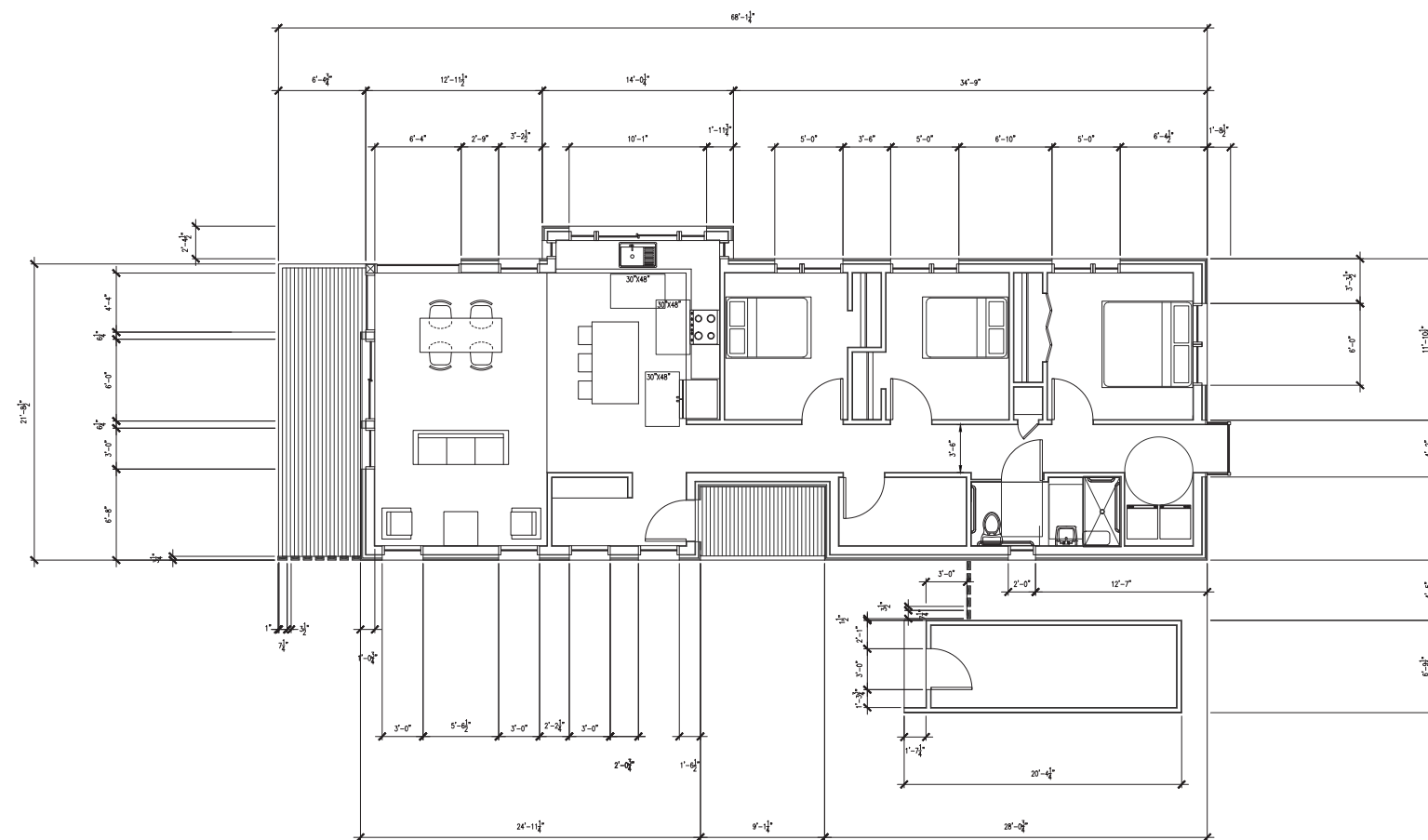


Seymour House: The previous project pictured with the Habitat 2020 cohort and the family now enjoying the bright house on Seymour Street in Middlebury.

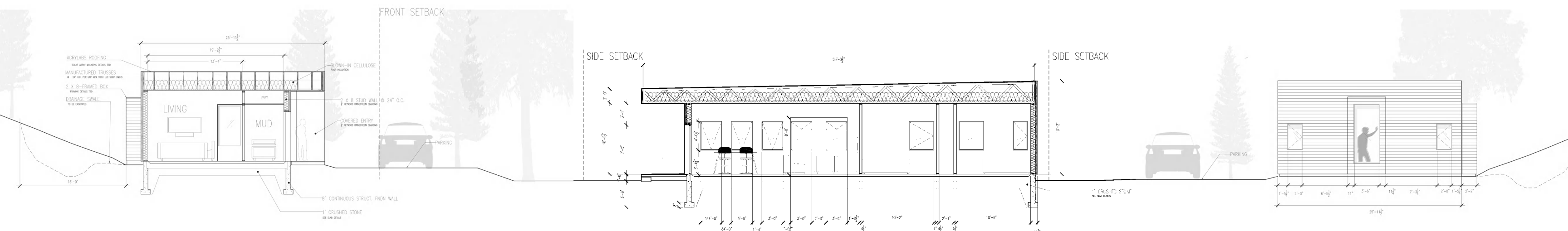




Boothwoods Lot 18 is a testament to what can be achieved when design meets determination. Approved by Vermont's administration, the house rose from vision to reality, encapsulating the spirit of community and shelter. Now, it stands proudly as a home for a family, a tangible symbol of hope and growth in architecture – an architecture that breathes, lives, and understands the pulse of its inhabitants.



Our mission was clear: to create high-performing, cost-effective homes that resonate with beauty and functionality.



OBJECT STUDY CENTER

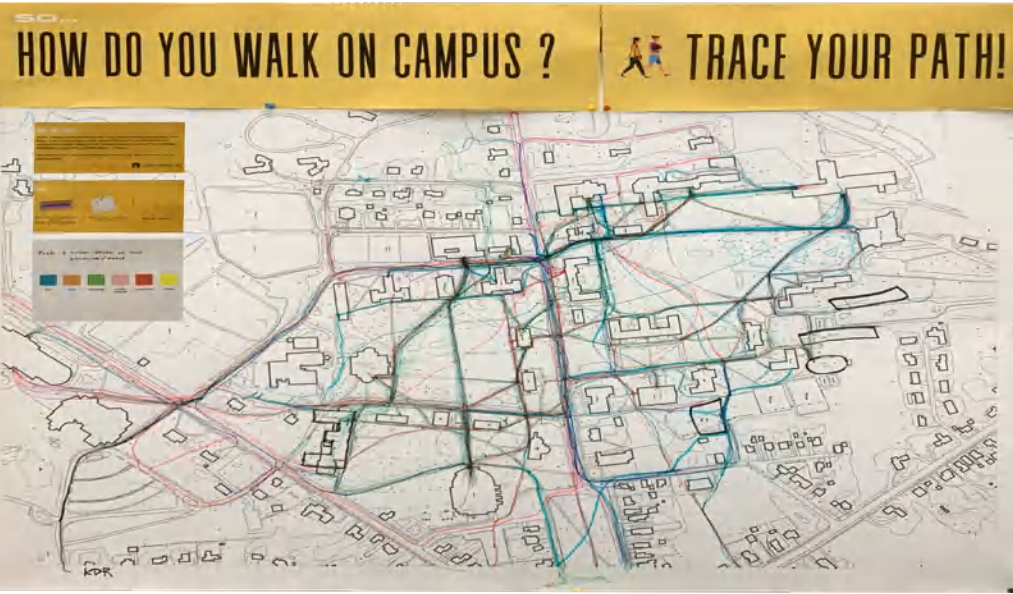
Senior Thesis: Crossroads of Knowledge and Space

Selected as Student Liaison with the Selldorf Architect on the project

Skills Developed:
Research & Analysis, Rendering,
Community Engagement

Instructor: Ben Allred
Autumn 2021
Middlebury College Campus

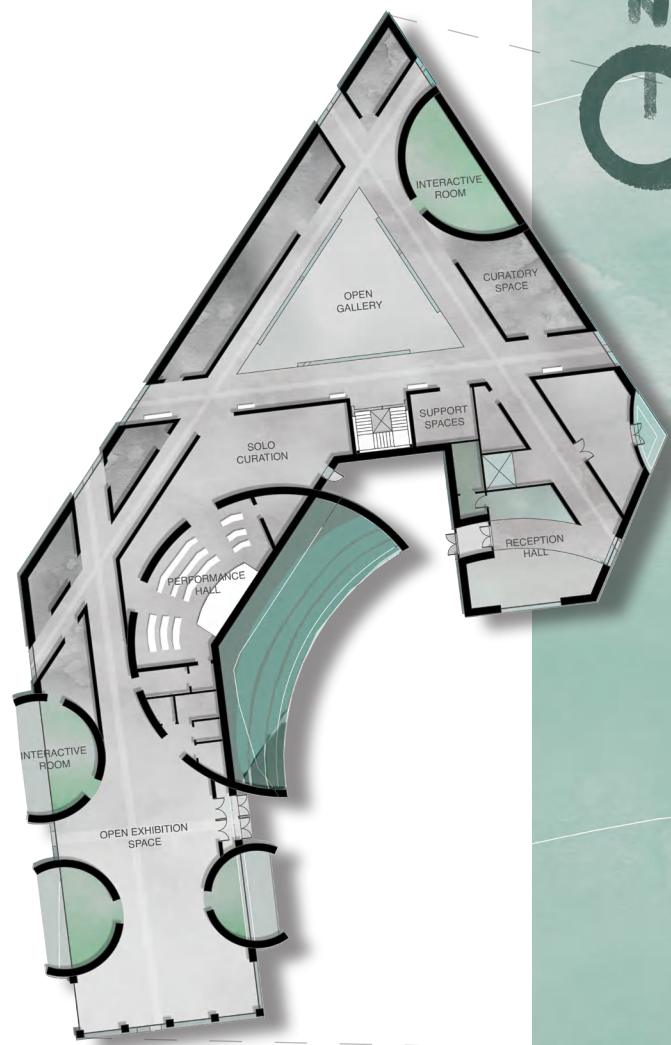
My vision for the Middlebury College Object Study Center was an **academic crossroads** which drew inspiration from the intersectional knowledge of unique disciplines within a university. It incorporated biophilic design principles, enhancing connectivity to nature and improving cognitive function. Inspired by the Abenaki tribe's heritage, I introduced an element of cultural sustainability, historical consciousness, and inclusivity.



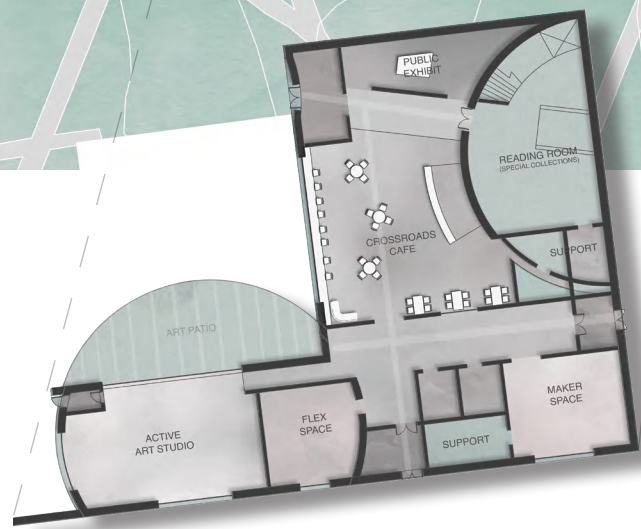
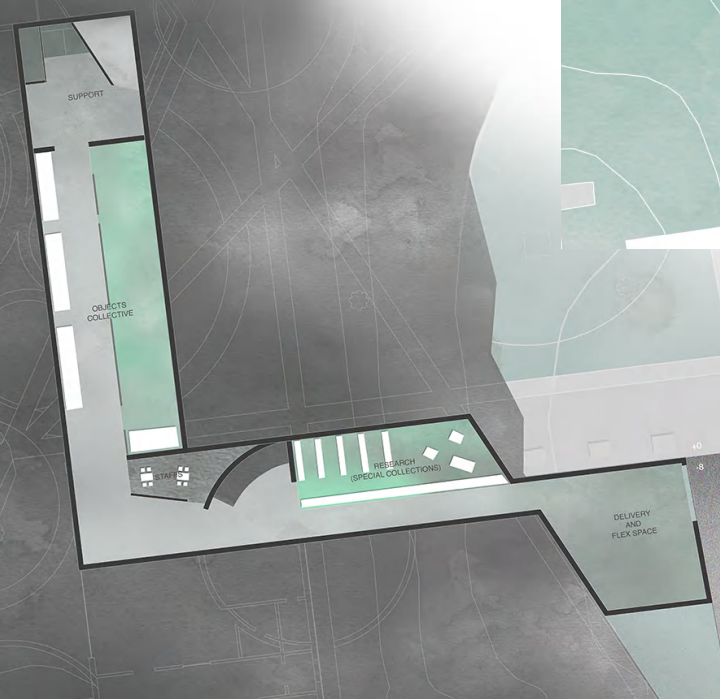
Following an extensive month long study of student movement patterns across various academic fields on campus, the design strategically enhanced the efficiency of student traffic. It lays out a unified route that maximizes functional efficiency and interaction fostering interdisciplinary collaboration. This is particularly significant because the Object Study Center hosts exhibits from diverse disciplines positioning it as a nexus of scholarly exchange.

“We are standing at a crossroads. It is a space and a metaphor deeply rooted in most cultures around the world. It is where you meet, where you mingle, and where you make choices.”

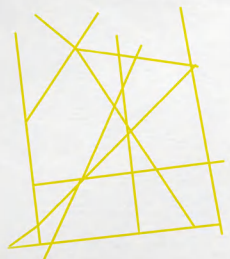
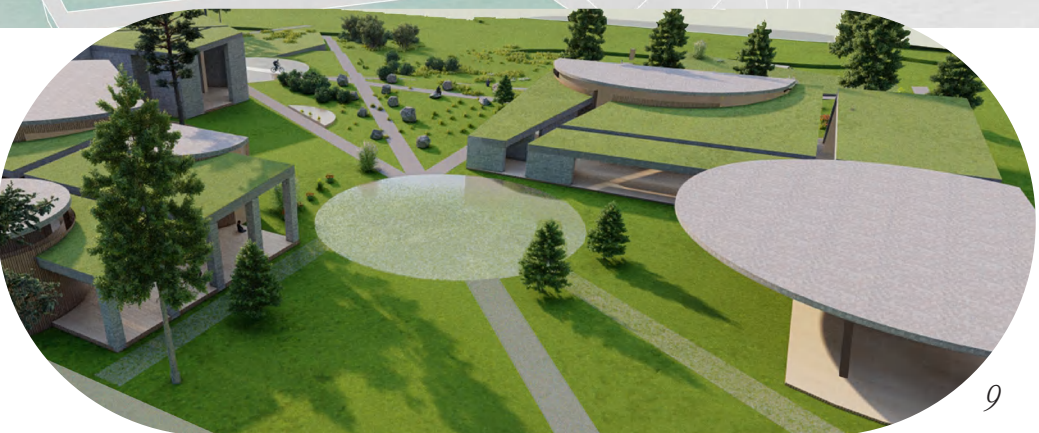




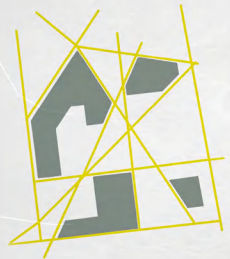
The crossing paths created spaces and formed distinct zones: the Student Engagement Center, the Exhibition Space for disciplinary artifacts, the Welcoming Area, and the Performance Zone. These areas are synergistically linked via a subterranean storage facility.



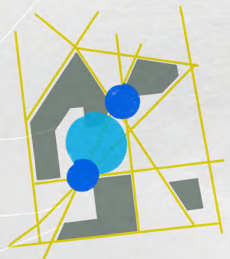
Incorporating circles into the design pays homage to the Abenaki people, the land's original stewards, by creating communal interactive spaces that reflect their cultural significance. Moreover, the design conscientiously integrates the existing flora and endorses the rewilding initiative.



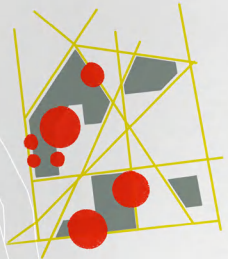
Crossing Paths



Emerged Structure



External Encounter



Internal Interactions Nodes



Meandering Paths



Bringing the elements of intersecting crossroads and circular motifs within, the interiors are designed with interactive and flexible spaces for dynamic object displays. The layout creates a clear axis for visitors to navigate while also encouraging exploration and discovery.



The building's roof design draws inspiration from Peter Zumthor's Thermes Vals. It features a unique blend of openings that forms several nodules alongside the walls. This design allows for natural light to permeate the interior, creating a dynamic and inviting atmosphere.



YDESTINY

TV Series; over 5M Views

Skills Developed:
Acting, Media and Entertainment,
Art Direction

Acting in the Thai drama 'YDestiny' (2021), I explore set design and human interactions from a fresh perspective. My role as Saturday challenged me to convey complex emotions and narratives, skills that are intrinsic to architectural storytelling. This experience extends my design capabilities beyond traditional boundaries.



SATURDAY
♀



คุณเกิดวันอะไร
คุณเชื่อเรื่อง...โชคชะตา
หรือพรหมลิขิตไหม

ทุกวันอังคาร 22:00 น.

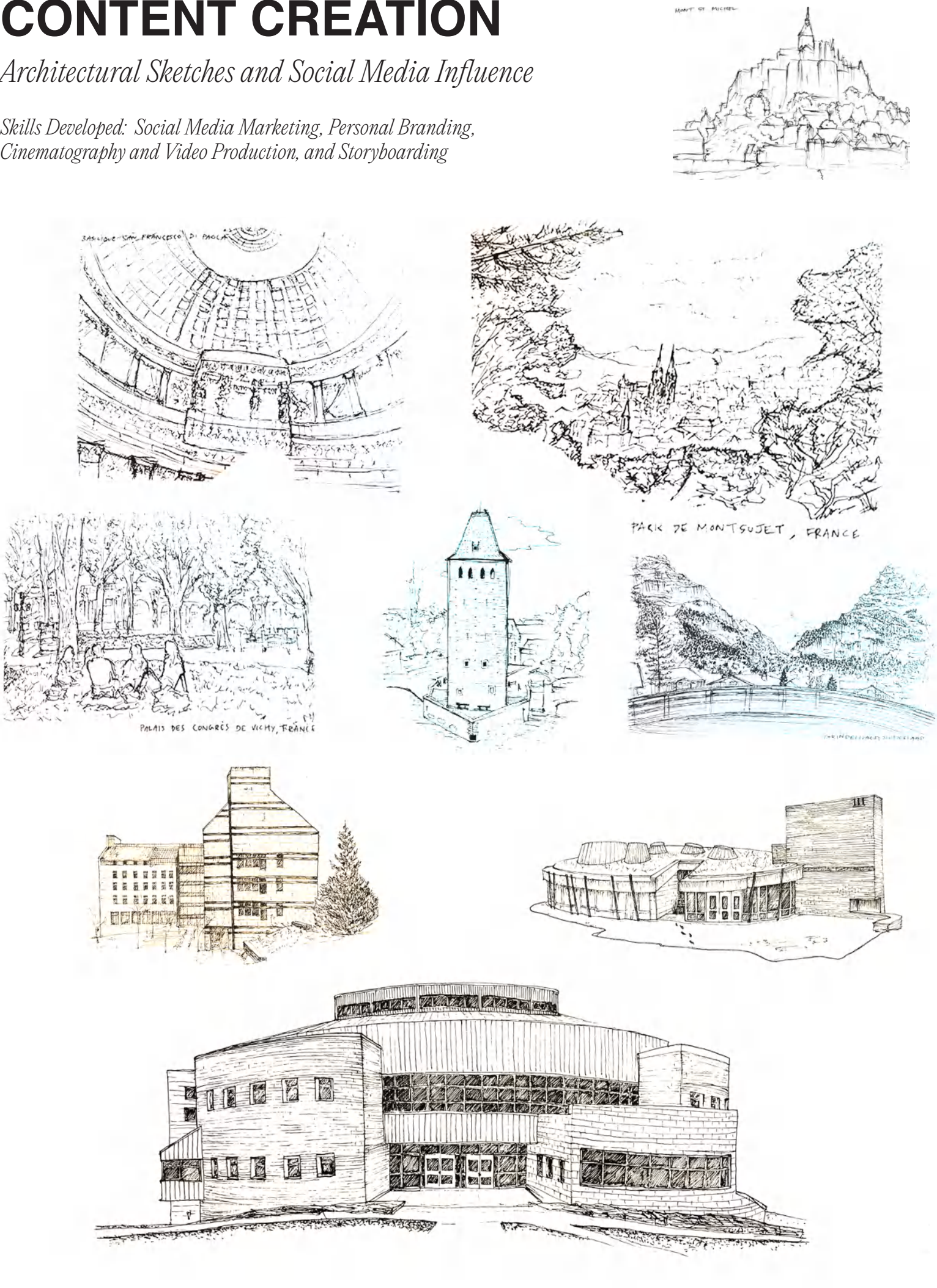
ดูฟรีทุกเครื่อง่ายที่ AISPLAY

เริ่ม 30 มีนาคม 2564

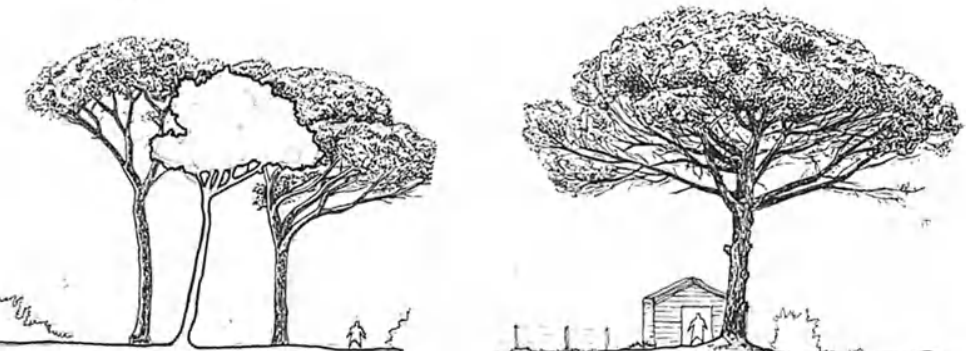
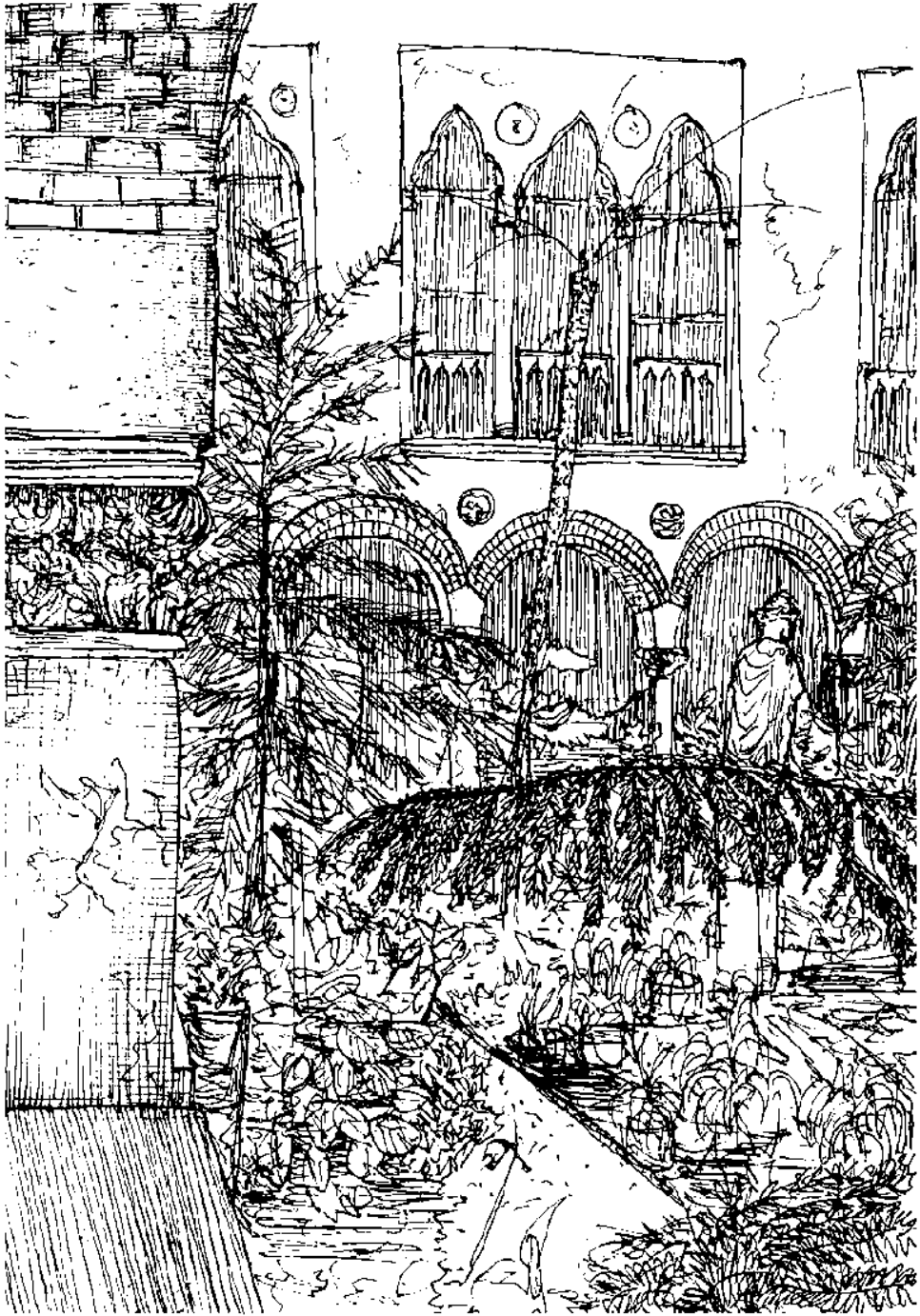
CONTENT CREATION

Architectural Sketches and Social Media Influence

Skills Developed: Social Media Marketing, Personal Branding, Cinematography and Video Production, and Storyboarding



After my journey in media and entertainment, my content creation was punctuated with architectural travel sketches that captured the essence of places I experienced. I showcased my expertise in travel and architecture on social media, garnering a significant following. It allowed me to develop my skills in video editing, cinematography and production. It allowed me to bring architecture and my perception of it to a wider audience. This ongoing project reflects my ability to engage and inform an audience through *creative storytelling*.



L'ART ENTREMÊLÉ

Study Abroad Urban Architecture Design Project in Paris

École Spéciale d'Architecture: Standalone Exchange Student in L2S2

Instructor: Thomas Corbasson
Autumn 2022
Paris, France

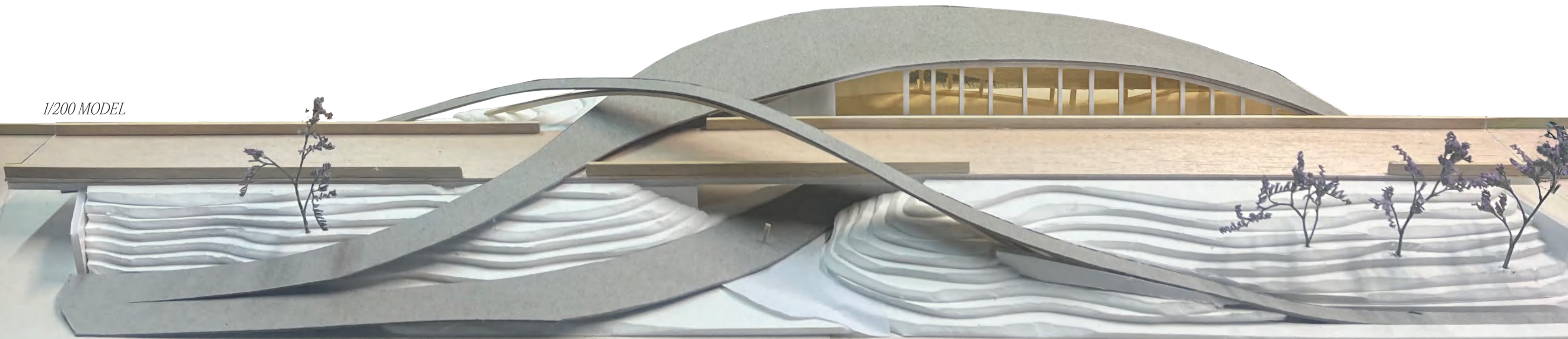
Skills Developed: Urban Planning,
Design Development and
Visual Representation with
Language Constraints

L'Art Entremêlé (The Intertwined Art) is a design project to revitalize the abandoned and underutilized railway (Petite Ceinture) that encircles Paris into a valuable public asset to benefit the community.

My project is situated in the inaccessible 19th arrondissement where the Petite Ceinture traverses the culturally rich Buttes Chaumont Park, through the neighborhoods by the Quai de l'Oiseau.

*The primary aim of this project was to create a **cohesive public green space** by transforming the historical transportation space and linking the scattered parts of the Petite Ceinture to the communities as public spaces.*

1/200 MODEL



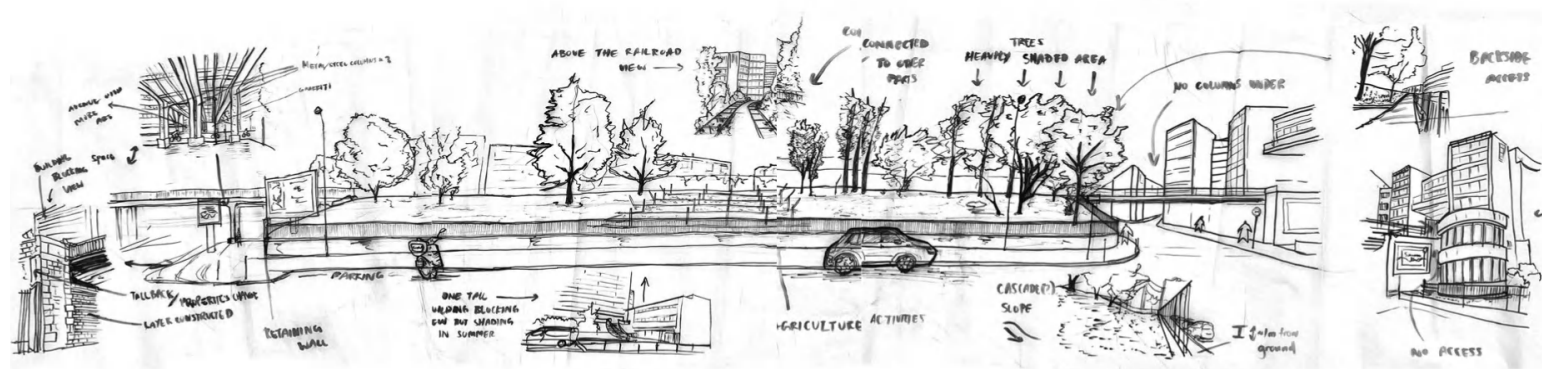


Existing Structures

Residential and mixed-use spaces, including a school, all radiating a strong sense of community but the space is like a void

Art progression

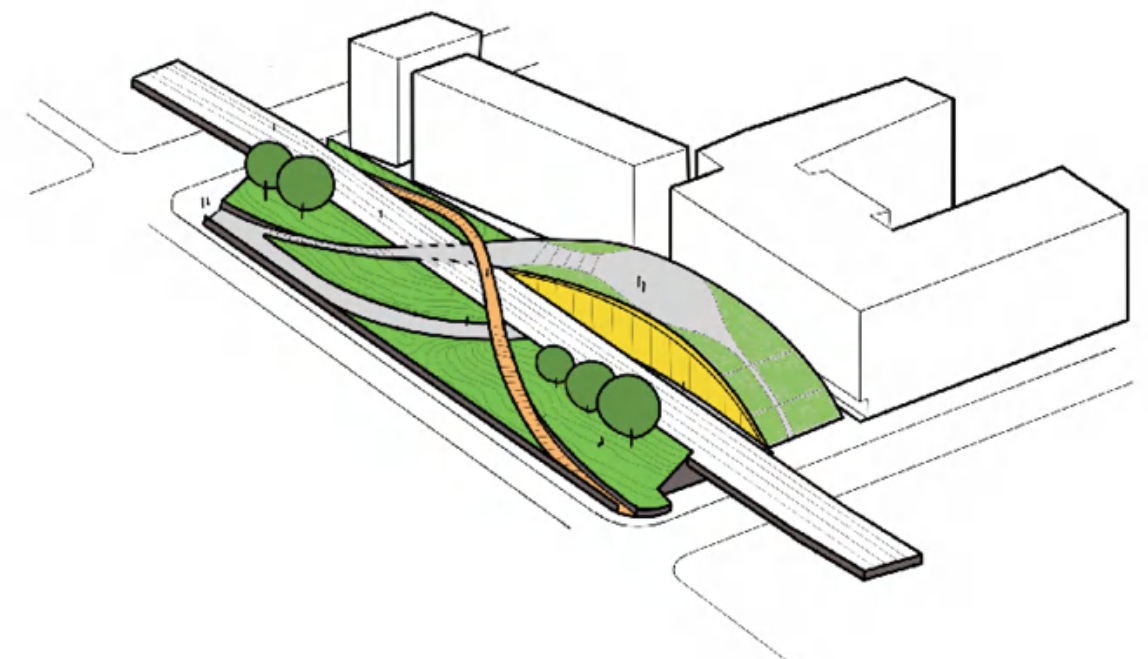
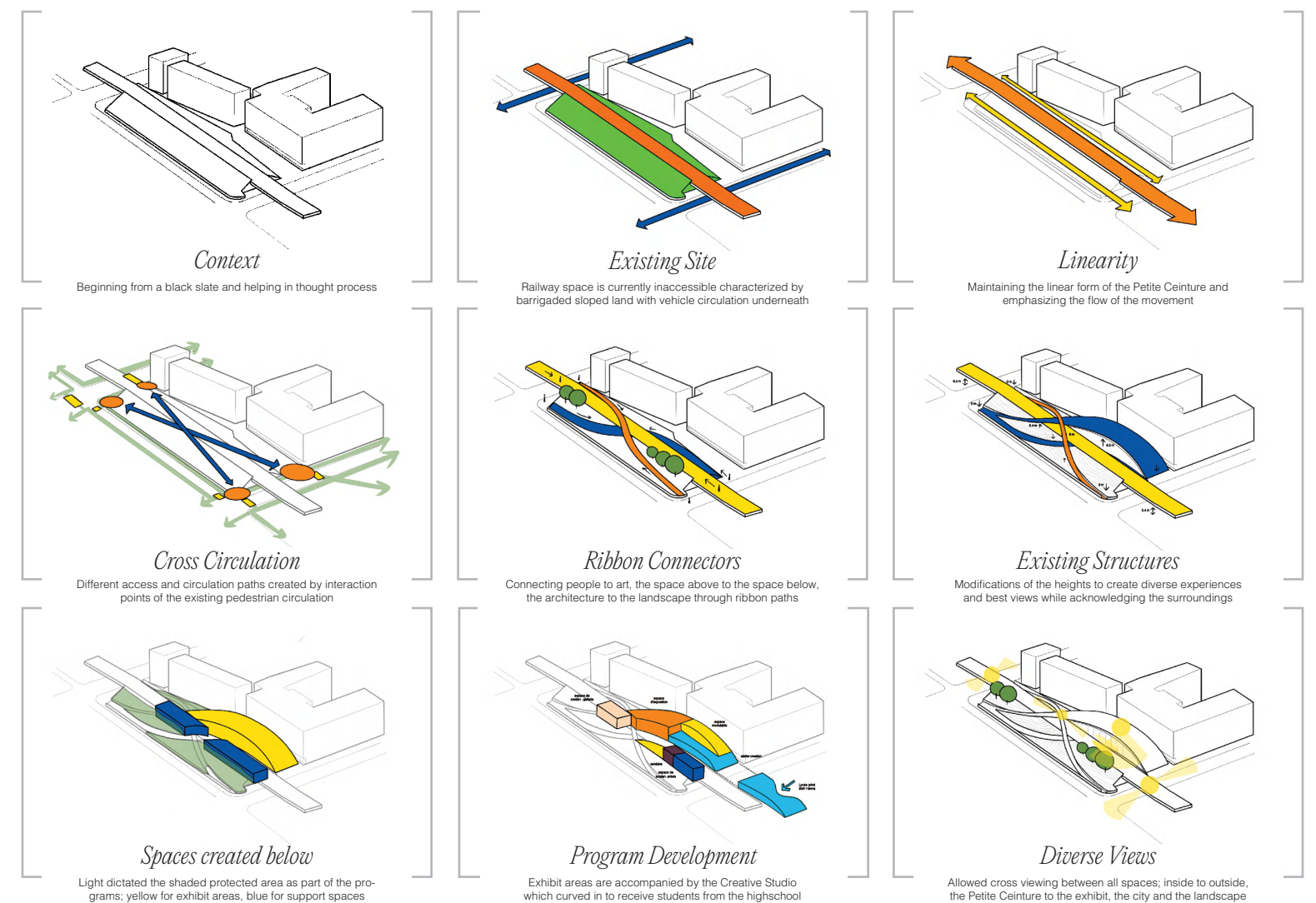
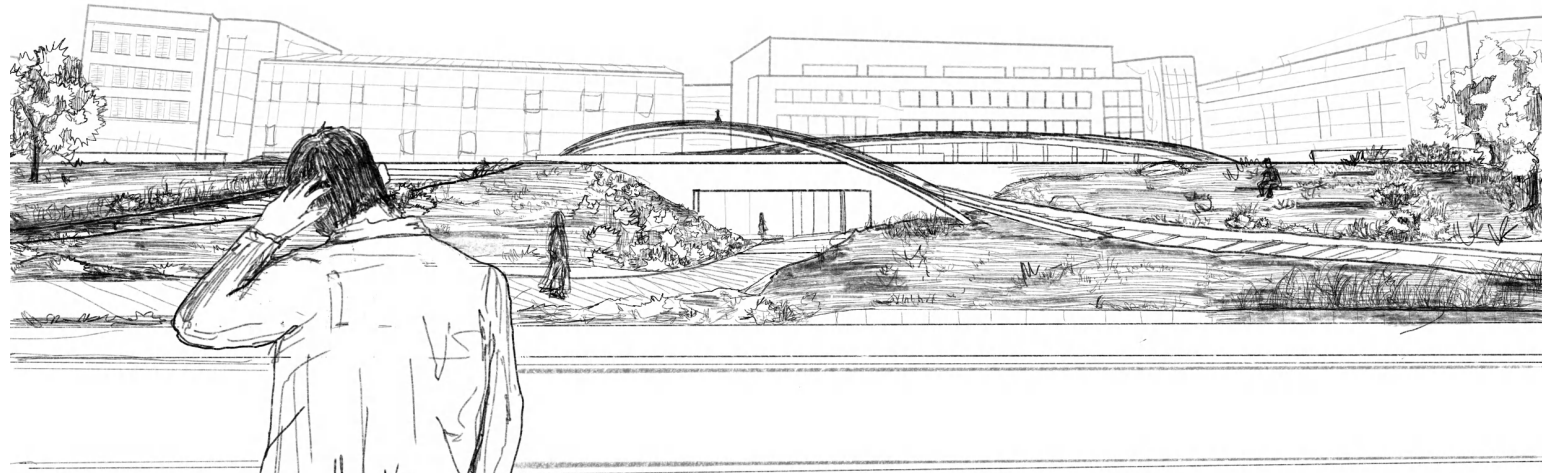
Different access and circulation paths created by interaction points of the existing pedestrian circulation



The area surrounding the project site is a vibrant mosaic of residential neighborhoods, mixed use developments, and educational institutions. Amidst this bustling community fabric the railway has long stood as an isolated void, an inaccessible divide that people circumvent rather than engage with.

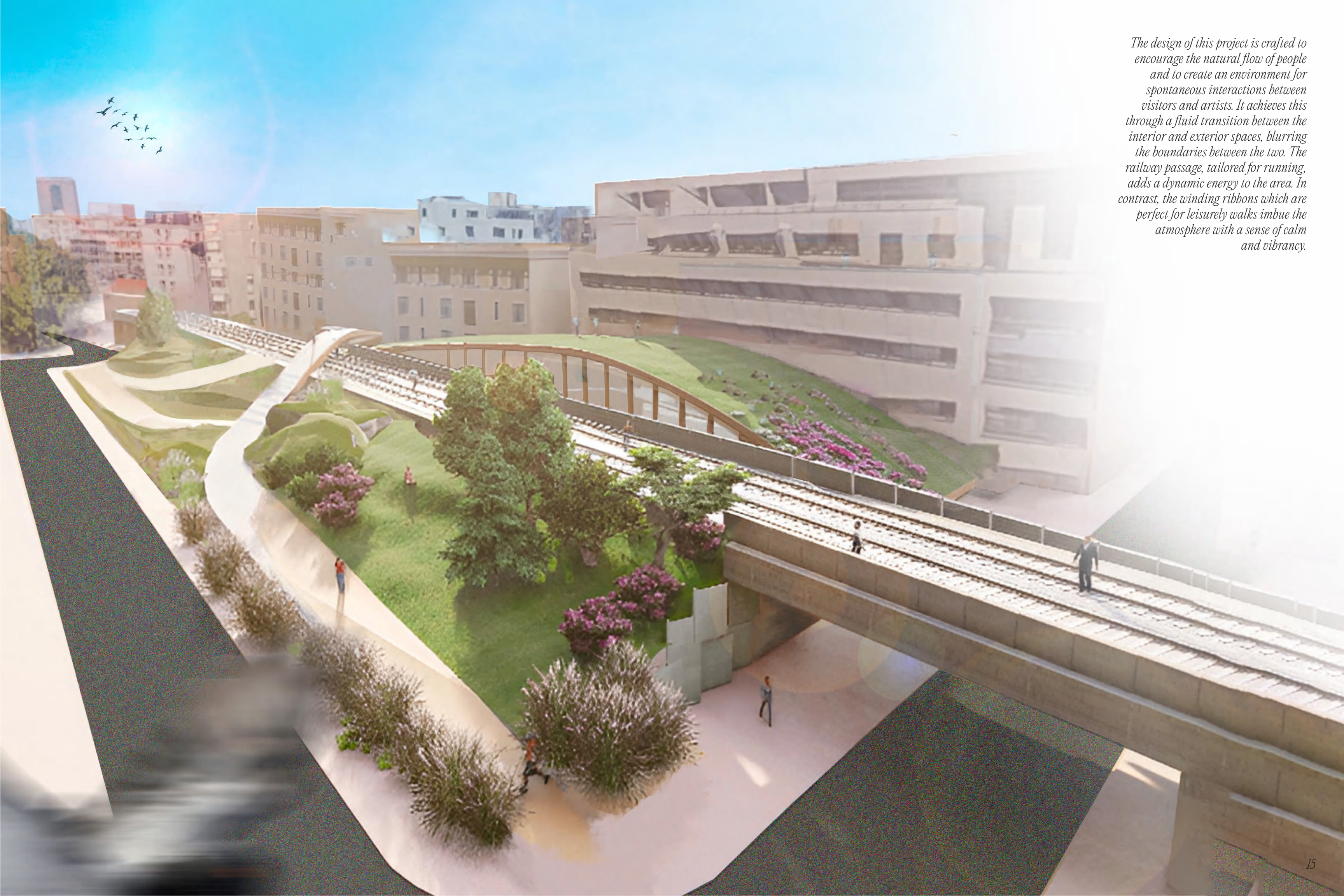
It is evident that the surrounding space is animated with art, a gradual infusion of creativity onto the streets. This progression is a result of the Festival de l'Ourcq, which enlivened the area with the vibrant hues of street art. However, a month-long observation revealed a disheartening pattern: while the festival's graffiti art flourished, other non-graffiti art installations suffered destruction within just a week.

In order to cultivate a cohesive flow between the urban canvas and the evolving art scene, it became clear that there is a need for dedicated spaces to support artists. Such spaces would protect the integrity of the installations while enhancing the artistic dialogue between the community and the creators. With the re-envisioned landscape below, the railway became an accessible public space for recreation.

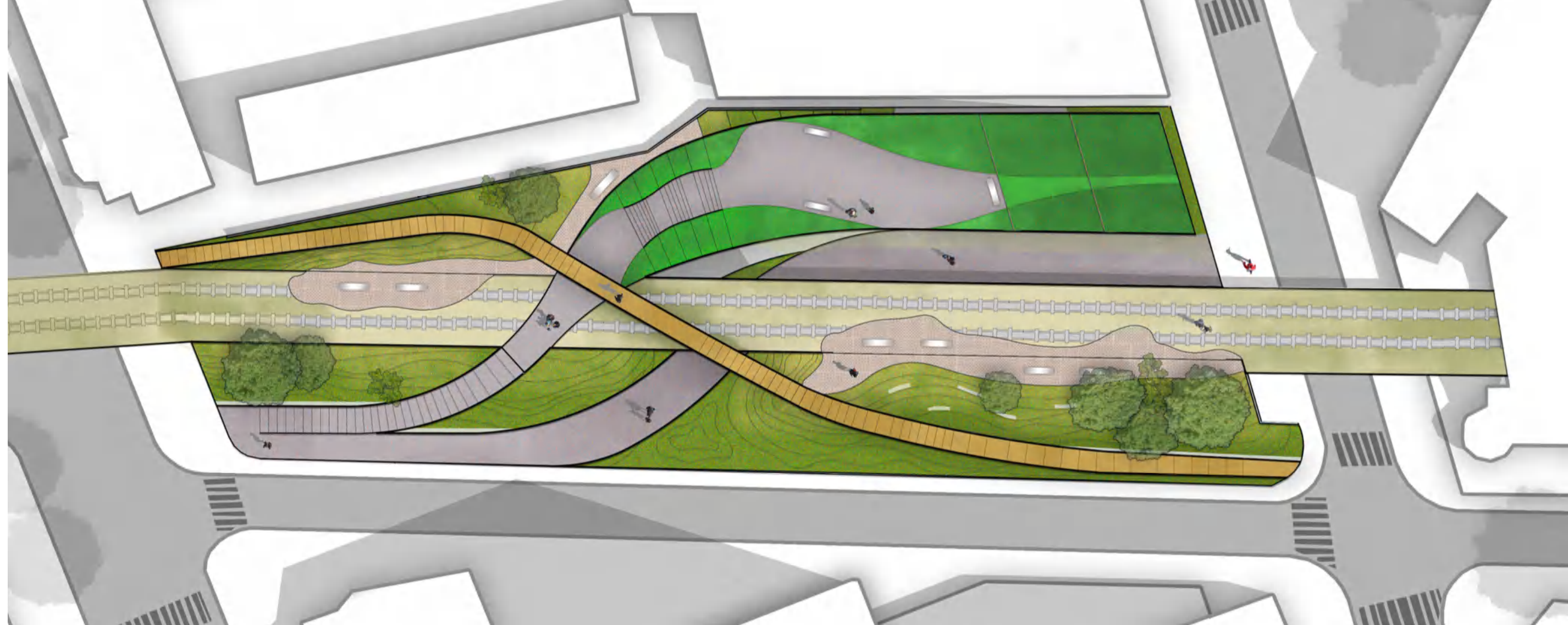


L'Art Entremele (The Intertwined Art)

Inspiration from the organic way people navigated through the space, it formulated the weaving ribbons of passages around the Petite Ceinture. Visitors can hence traverse the landscape and engage in recreational activities, immerse themselves in the space.

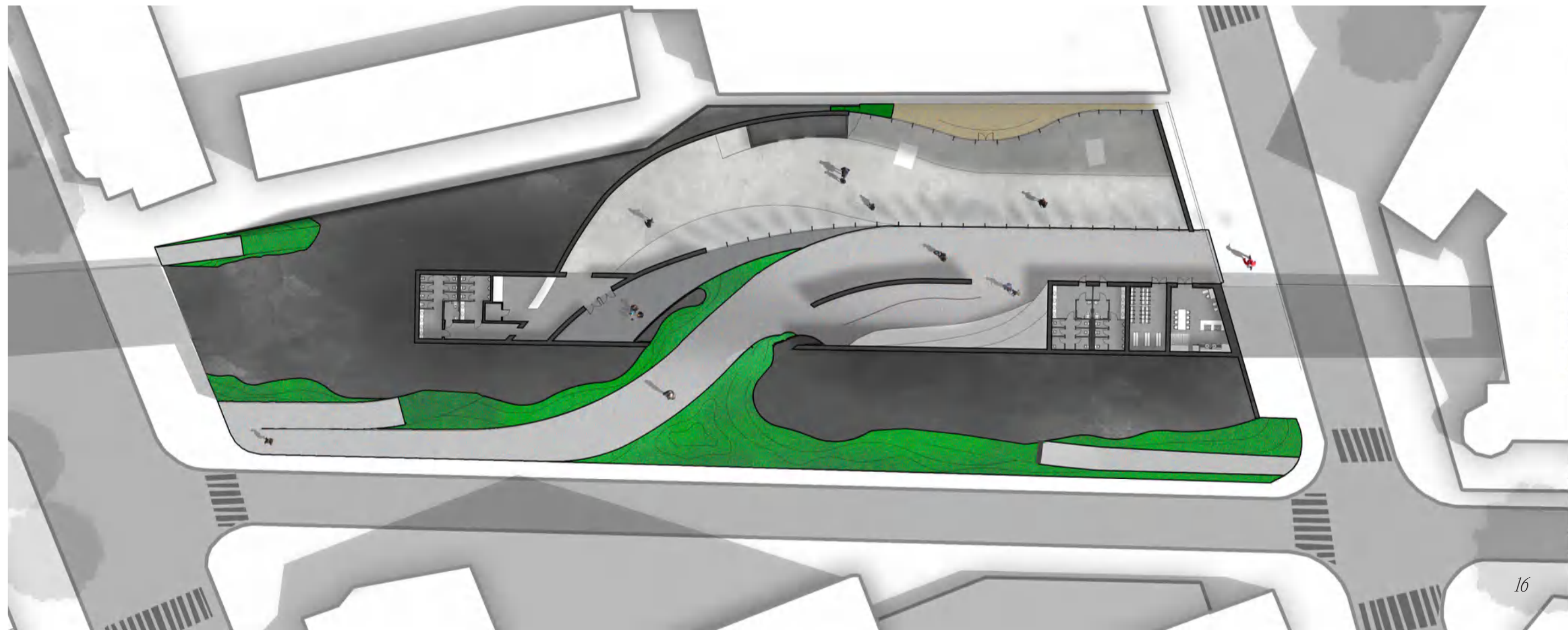


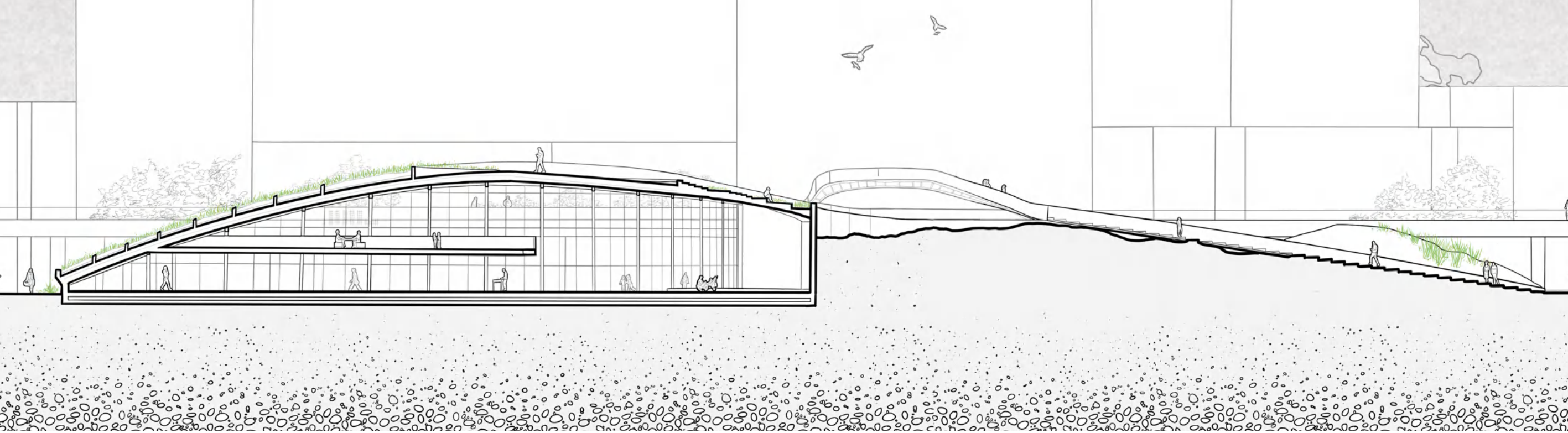
The design of this project is crafted to encourage the natural flow of people and to create an environment for spontaneous interactions between visitors and artists. It achieves this through a fluid transition between the interior and exterior spaces, blurring the boundaries between the two. The railway passage, tailored for running, adds a dynamic energy to the area. In contrast, the winding ribbons which are perfect for leisurely walks imbue the atmosphere with a sense of calm and vibrancy.



The under-railway areas serve as support spaces and the external landscape are integrated, infusing them with an organic essence. The exhibition space, curved in to create receiving spaces for school's students. It is also intentionally crowned with a gracefully curved green roof to create a pocket of green in the urban fabric.

To spotlight ecological sensitivity, the project preserves the existing trees and introduces a diverse array of new plant species. This thoughtful inclusion enhances the area's aesthetic appeal while enhancing the biodiversity, making the space a vibrant, green haven in an urban setting.

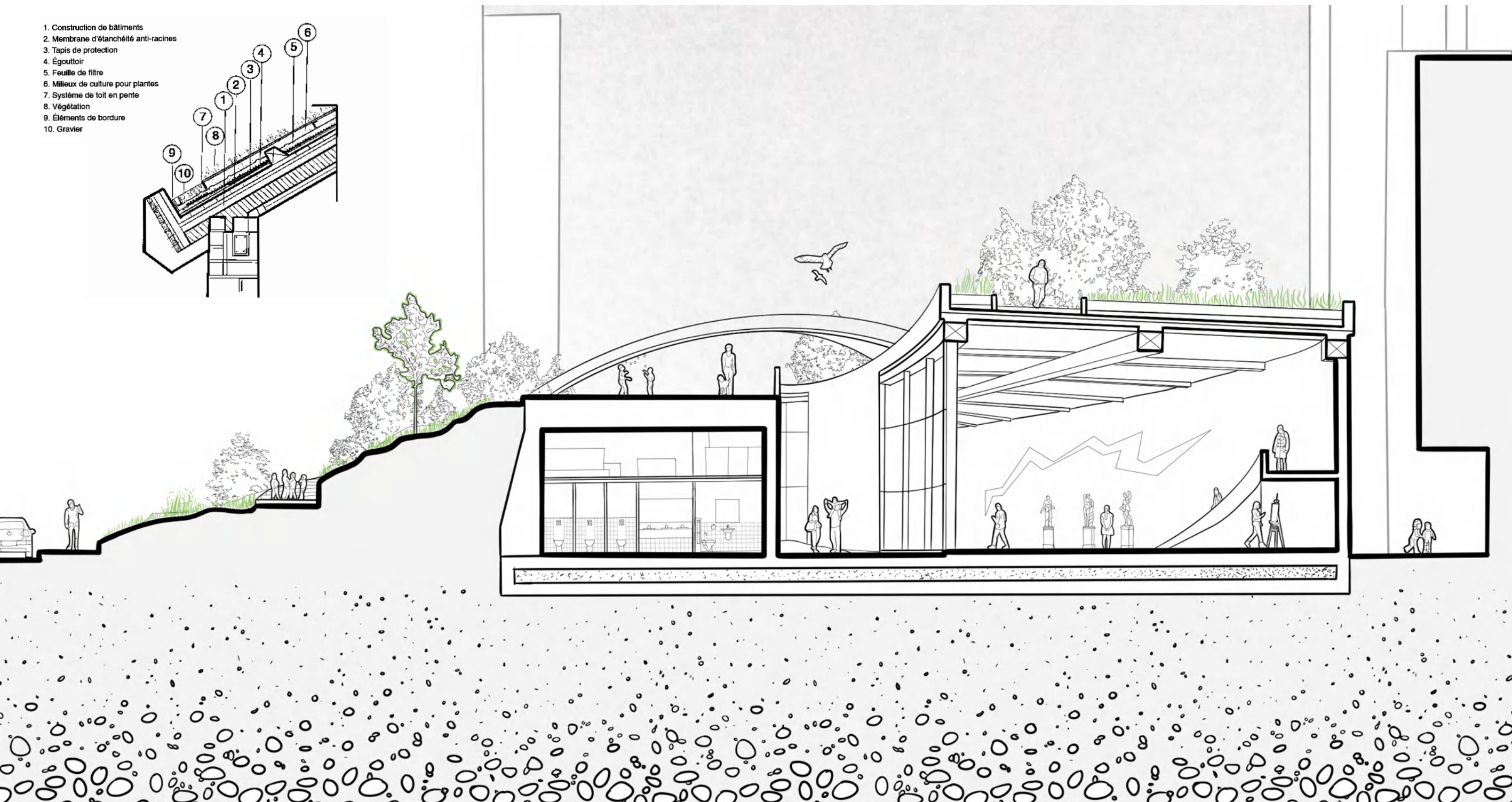
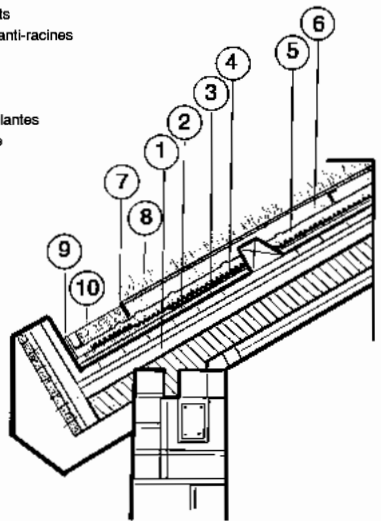




The project's green spaces are strategically arranged, featuring natural vegetation along the pathways, a green roof with a flower garden, and a sloping lawn under the trees. Each section presents unique perspectives and highlights the interplay between indoor and outdoor spaces.

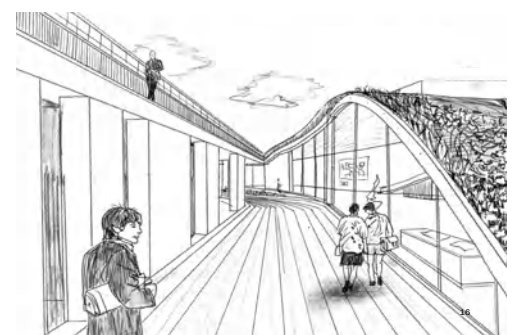
Inside the gallery, expansive windows frame picturesque views of these space., From the railway, the paths weave a tapestry of nature and movement. These perspectives facilitate a dynamic interaction between the observer and the landscape, drawing people into a journey along various 'ribbons of path'.

1. Construction de bâtiments
2. Membrane d'étanchéité anti-racines
3. Tapis de protection
4. Égouttoir
5. Feuille de filtre
6. Milieux de culture pour plantes
7. Système de toit en pente
8. Végétation
9. Éléments de bordure
10. Gravier



This design piques curiosity but also fosters a deeper connection with the environment, art, and the human, encouraging exploration and discovery.

In between the railway and the gallery



CHOPSTICK REVIVAL

Internship at ChopValue: From Chopsticks to Treasures

Circular Economy Initiative from collecting Chopsticks Waste to Production

Autumn 2023
Boston, MA

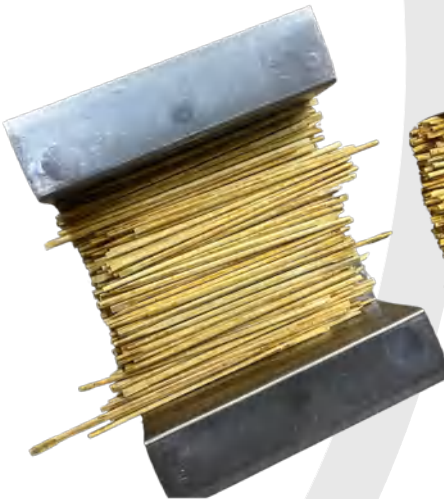
Skills Developed: Sustainable
Engineering, Craftsmanship
and Material Innovation



I embarked on a journey to **redefine the concept of waste** by transforming discarded chopsticks into functional and aesthetic products. This project represented not just an environmental initiative but a deeper commitment to the circular economy of Boston.

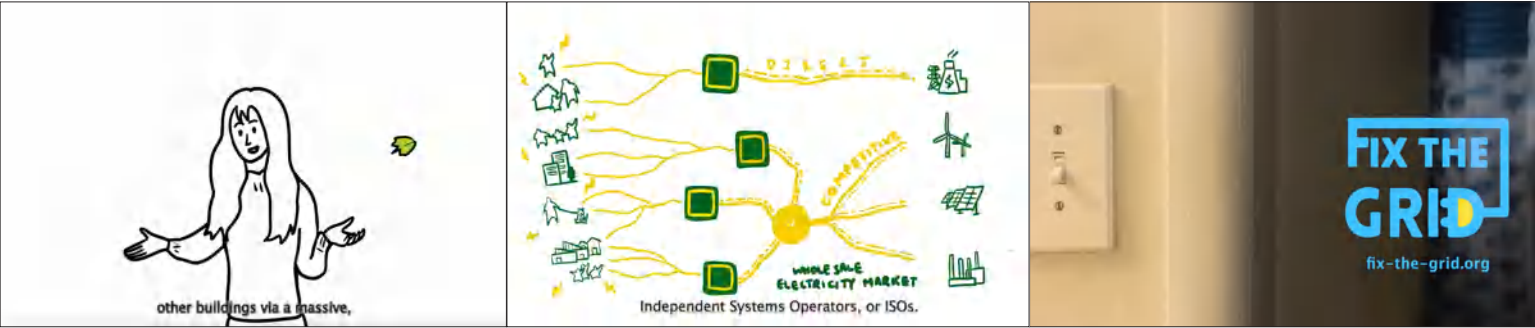
My role was integrated into the process of converting chopstick waste collected from over 80 restaurants, into valuable, recycled products. Each step was an exercise in precision and sustainability, recycling the material while retaining its quality and character.

I value the opportunity to collaborate with local communities. The hands-on experience with tools and machinery enhanced my technical skill. The meticulous process of oiling and laser engraving allowed me to infuse a touch of artistry into each product.



STORYTELLING

An eclectic formulation of visual and functional communication



‘The Fix The Grid’ campaign video, a Slingshot initiative where my animation breathed life into static information, transforming it into a dynamic narrative that calls for urgent infrastructural action.. This project showcased my ability to distill complex concepts into compelling visual stories that captivate and inform.



My illustrated interpretation of a poem “A Penny for the Youth” visually amplifies the urgent message of environmental stewardship, merging art with activism to evoke emotional and intellectual responses on this critical issue.

“Guide to Act 250 and Local Zoning” booklet for SUSU Community Farms (Collaborative) illustrates my ability to distill complex legal and environmental information into an accessible, informative resource, aiding community efforts in sustainable farming and land use.

This QGIS project maps the accessibility of parks from schools, providing a critical tool for urban planning. My maps guide planners toward developing the most needed green spaces, weaving a picture of connectivity and community enhancement.



The ‘Boogie Down Grind’ café branding, from my collaboration with MiddCORE, were infused with the essence of the South Bronx’s hip-hop heritage, working alongside urban revitalization strategist Majora Carter to create a community-centered space.

Collaborative graphic works for Livelightbuildings, a modular housing company aimed to provide affordable and flexible micro-housing inside and outside the urban area. These designs provide affordable, adaptable living solutions, demonstrating my ability to mold space and function to meet contemporary housing needs.



*Photography
Visual storytelling through my lens*